

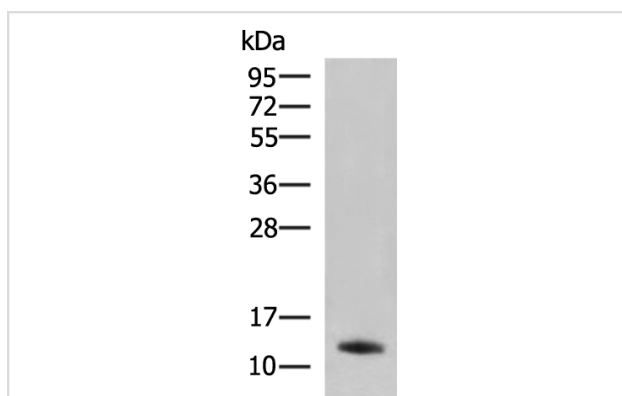
Description

Product Name	PPY Antibody
Host Species	Rabbit
Clonality	Polyclonal
Purification	Antigen affinity purification
Applications	WB
Species Reactivity	Hu, Rt
Specificity	The antibody detects endogenous levels of total PPY protein.
Immunogen Type	Peptide
Immunogen Description	Synthetic peptide of human PPY
Target Name	PPY
Other Names	PP; PNP
Accession No.	Swiss-Prot#:P01298NCBI Gene ID:5539Gene Accssion:NP_002713
Uniprot	P01298
GeneID	5539;
Calculated MW	11 kDa
Concentration	3
Formulation	Rabbit IgG in pH7.4 PBS, 0.05% NaN ₃ , 40% Glycerol.
Storage	Store at -20°C

Application Details

WB dilution: 1:1000-5000

Images



Gel: 12%SDS-PAGE, Lysate: 40 µg, Lane: Rat pancreas tissue lysate, Primary antibody:47676(PPY Antibody) at dilution 1/2500, Secondary antibody: Goat anti rabbit IgG at 1/5000 dilution, Exposure time: 3 minutes

Background

This gene encodes a member of the neuropeptide Y (NPY) family of peptides. The encoded 95 aa preproprotein is synthesized in the pancreatic islets of Langerhans and proteolytically processed to generate two peptide products. These products include the active pancreatic hormone of 36 aa and an

icosapeptide of unknown function. This hormone acts as a regulator of pancreatic and gastrointestinal functions and may be important in the regulation of food intake. Plasma level of this hormone has been shown to be reduced in conditions associated with increased food intake and elevated in anorexia nervosa. In addition, infusion of this hormone in obese rodents has shown to decrease weight gain. Alternative splicing results in multiple transcript variants, at least one of which encodes an isoform that is proteolytically processed.

Note: This product is for in vitro research use only