

## TRIM28(phospho-Ser824) Antibody

Catalog No: #13436

Orders: [order@signalwayantibody.com](mailto:order@signalwayantibody.com)Support: [tech@signalwayantibody.com](mailto:tech@signalwayantibody.com)

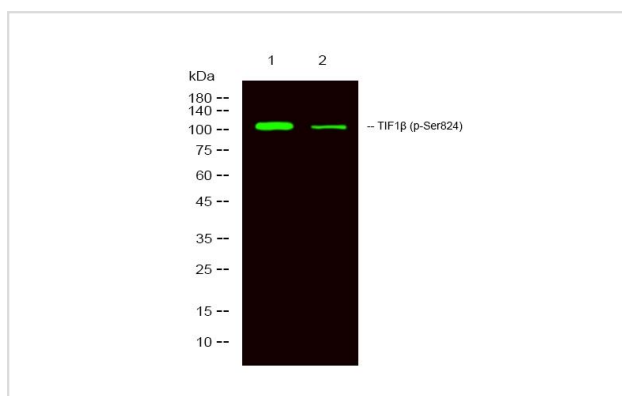
## Description

Product Name	TRIM28(phospho-Ser824) Antibody
Host Species	Rabbit
Clonality	Polyclonal
Purification	The antibody was affinity-purified from rabbit serum by affinity-chromatography using specific immunogen.
Applications	WB, IHC
Species Reactivity	Hu, Ms, Rt
Specificity	The antibody detects endogenous levels of total TRIM28(phospho-Ser824) protein.
Immunogen Type	Peptide
Immunogen Description	Synthetic peptide of human TRIM28(phospho-Ser824)
Target Name	TRIM28
Other Names	KAP1; TF1B; RNF96; TIF1B; PPP1R157
Accession No.	Swiss-Prot#:Q13263NCBI Gene ID:10155Gene Accssion:NP_005753
Uniprot	Q13263
GeneID	10155;
Calculated MW	110kD
Concentration	1 mg/ml
Formulation	Liquid in PBS containing 50% glycerol, 0.5% BSA and 0.02% sodium azide.
Storage	Store at -20°C

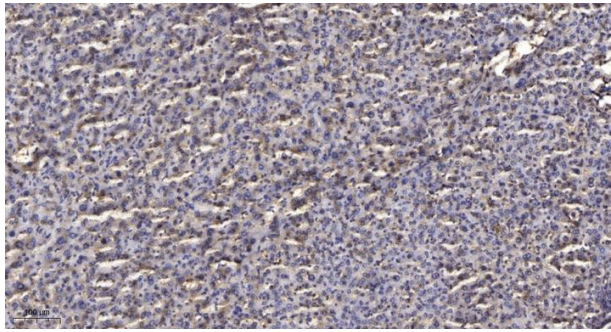
## Application Details

WB 1:500-2000;IHC 1:50-300

## Images



Western Blot analysis of 1 Hela, 2 treated with LPS 100ng/mL 20min, using primary antibody at 1:1000 dilution.



Immunohistochemical analysis of paraffin-embedded human liver cancer. 1, Antibody was diluted at 1:200(4° overnight). 2, Tris-EDTA,pH9.0 was used for antigen retrieval. 3,Secondary antibody was diluted at 1:200(room temperature, 45min).

## Background

The protein encoded by this gene mediates transcriptional control by interaction with the Kruppel-associated box repression domain found in many transcription factors. The protein localizes to the nucleus and is thought to associate with specific chromatin regions. The protein is a member of the tripartite motif family. This tripartite motif includes three zinc-binding domains, a RING, a B-box type 1 and a B-box type 2, and a coiled-coil region. [provided by RefSeq, Jul 2008],

Note: This product is for in vitro research use only