

PUMA Polyclonal Antibody

Catalog No: #41373

Package Size: #41373-1 50ul #41373-2 100ul

Orders: order@signalwayantibody.com

Support: tech@signalwayantibody.com

Description

Product Name	PUMA Polyclonal Antibody
Host Species	Rabbit
Clonality	Polyclonal
Purification	The antibody was affinity-purified from rabbit antiserum by affinity-chromatography using epitope-specific immunogen.
Applications	WB ELISA
Species Reactivity	Hu Ms Rt
Specificity	PUMA Polyclonal Antibody detects endogenous levels of PUMA protein.
Immunogen Type	peptide
Immunogen Description	Synthesized peptide derived from the C-terminal region of human PUMA.
Target Name	PUMA
Other Names	BBC3; PUMA; Bcl-2-binding component 3; JFY-1; p53 up-regulated modulator of apoptosis
Accession No.	Swiss-Prot: Q9BXH1NCBI Gene ID: 27113
Uniprot	Q96PG8
GeneID	27113;
SDS-PAGE MW	23kd
Concentration	1mg/ml
Formulation	Liquid in PBS containing 50% glycerol, 0.5% BSA and 0.02% sodium azide.
Storage	Store at -20°C/1 year

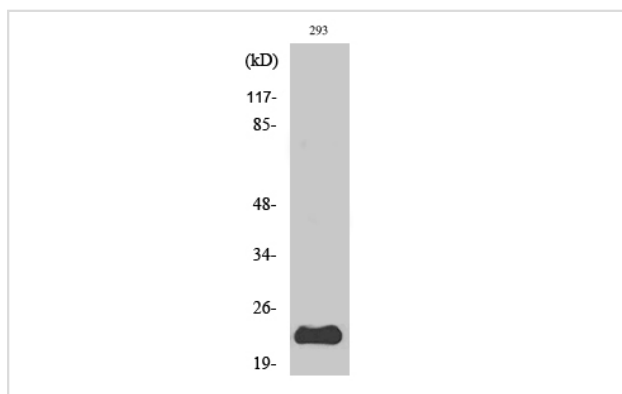
Application Details

Western Blot: 1/500 - 1/2000.

ELISA: 1/10000.

Not yet tested in other applications.

Images



Western Blot analysis of 293 cells using PUMA Polyclonal Antibody

Note: This product is for in vitro research use only