

Rad50 Polyclonal Antibody

Catalog No: #41380

Package Size: #41380-1 50ul #41380-2 100ul

Orders: order@signalwayantibody.comSupport: tech@signalwayantibody.com

Description

Product Name	Rad50 Polyclonal Antibody
Host Species	Rabbit
Clonality	Polyclonal
Purification	The antibody was affinity-purified from rabbit antiserum by affinity-chromatography using epitope-specific immunogen.
Applications	WB IHC ELISA IF
Species Reactivity	Hu Ms Rt
Specificity	Rad50 Polyclonal Antibody detects endogenous levels of Rad50 protein.
Immunogen Description	Synthesized peptide derived from the Internal region of human Rad50.
Target Name	Rad50
Other Names	RAD50; DNA repair protein RAD50; hRAD50
Accession No.	Swiss-Prot: Q92878NCBI Gene ID: 10111
Uniprot	Q92878
GeneID	10111;
SDS-PAGE MW	153kd
Concentration	1mg/ml
Formulation	Liquid in PBS containing 50% glycerol, 0.5% BSA and 0.02% sodium azide.
Storage	Store at -20°C/1 year

Application Details

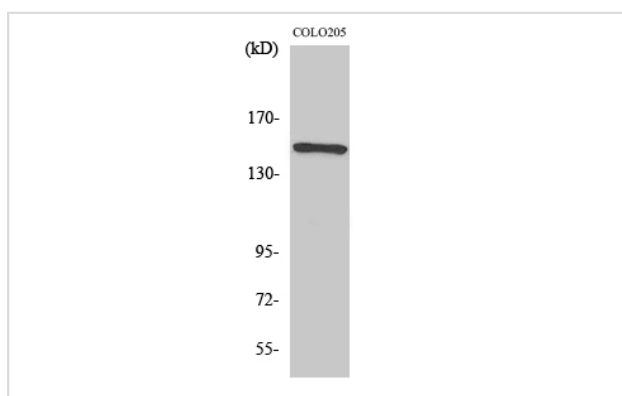
Western Blot: 1/500 - 1/2000.

Immunohistochemistry: 1/100 - 1/300.

ELISA: 1/20000.

Not yet tested in other applications.

Images



Western Blot analysis of HuvEc cells using Rad50 Polyclonal Antibody

Note: This product is for in vitro research use only