

HBB Antibody

Catalog No: #47773

Orders: order@signalwayantibody.comSupport: tech@signalwayantibody.com

Description

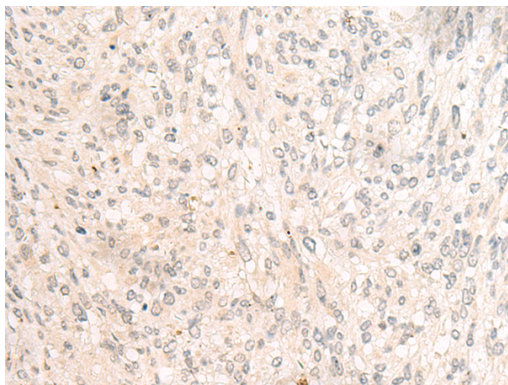
Product Name	HBB Antibody
Host Species	Rabbit
Clonality	Polyclonal
Purification	Antigen affinity purification
Applications	WB, IHC
Species Reactivity	Hu, Ms, Rt
Specificity	The antibody detects endogenous levels of total HBB protein.
Immunogen Type	Peptide
Immunogen Description	Synthetic peptide of human HBB
Target Name	HBB
Other Names	CD113t-C; beta-globin
Accession No.	Swiss-Prot#:P68871NCBI Gene ID:3043Gene Accssion:NP_000509
Uniprot	P68871
GeneID	3043;
Calculated MW	16 kDa
Concentration	0.5
Formulation	Rabbit IgG in pH7.4 PBS, 0.05% NaN ₃ , 40% Glycerol.
Storage	Store at -20°C

Application Details

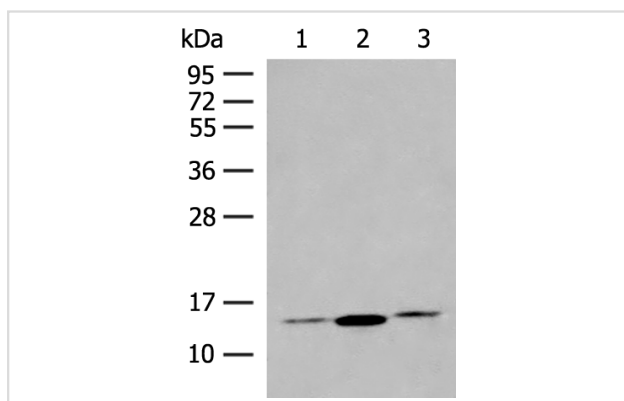
WB dilution:1:200-1000

IHC dilution:1: 10-50

Images



The image is immunohistochemistry of paraffin-embedded Human liver cancer tissue using 47773(HBB Antibody) at dilution 1/20.(Original magnification: 200)



Gel: 12%SDS-PAGE, Lysate: 40 µg, Lane 1-3: Mouse liver tissue, Human heart tissue and Human plasma solution lysates, Primary antibody:47773(HBB Antibody) at dilution 1/200, Secondary antibody: Goat anti rabbit IgG at 1/8000 dilution, Exposure time: 1 minute

Background

The alpha (HBA) and beta (HBB) loci determine the structure of the 2 types of polypeptide chains in adult hemoglobin, Hb A. The normal adult hemoglobin tetramer consists of two alpha chains and two beta chains. Mutant beta globin causes sickle cell anemia. Absence of beta chain causes beta-zero-thalassemia. Reduced amounts of detectable beta globin causes beta-plus-thalassemia. The order of the genes in the beta-globin cluster is 5'-epsilon -- gamma-G -- gamma-A -- delta -- beta--3'.

Note: This product is for in vitro research use only