

GPR89A/GPR89B Antibody

Catalog No: #47781

Orders: order@signalwayantibody.com

Support: tech@signalwayantibody.com

Description

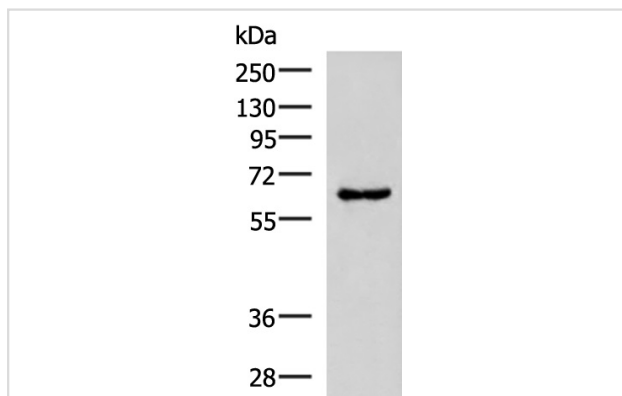
Product Name	GPR89A/GPR89B Antibody
Host Species	Rabbit
Clonality	Polyclonal
Purification	Antigen affinity purification
Applications	WB, IHC
Species Reactivity	Hu, Ms
Specificity	The antibody detects endogenous levels of total GPR89A/GPR89B protein.
Immunogen Type	Peptide
Immunogen Description	Synthetic peptide of human GPR89A/GPR89B
Target Name	GPR89A/GPR89B
Other Names	GPHR; GPR89; SH120; GPR89B; GPR89C; UNQ192
Accession No.	Swiss-Prot#:B7ZQA6/P0CG08NCBI Gene ID:51463/653519Gene Accssion:NP_057418
Uniprot	B7ZQA6
GeneID	51463;653519;
Calculated MW	53 kDa
Concentration	0.8
Formulation	Rabbit IgG in pH7.4 PBS, 0.05% NaN ₃ , 40% Glycerol.
Storage	Store at -20°C

Application Details

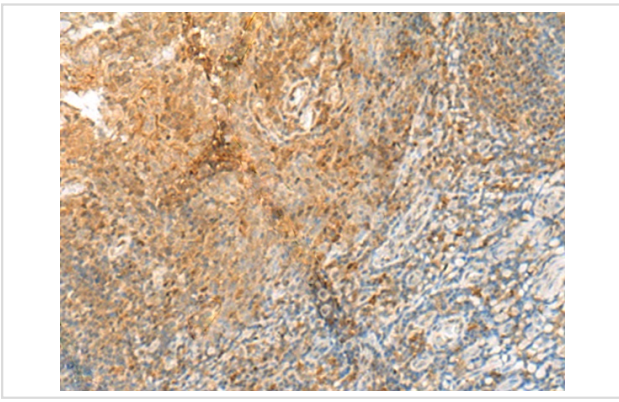
WB dilution:1:200-1000

IHC dilution:1: 20-100

Images



Gel: 8%SDS-PAGE, Lysate: 40 µg, Lane 1-2: Mouse kidney tissue and Human heart tissue lysates, Primary antibody:47781(GPR89A/GPR89B Antibody) at dilution 1/300, Secondary antibody: Goat anti rabbit IgG at 1/8000 dilution, Exposure time: 1 minute



The image is immunohistochemistry of paraffin-embedded Human tonsil tissue using 47781(GPR89A/GPR89B Antibody) at dilution 1/30.(Original magnification: 200)

Background

GPR89A is a nearly identical copy of the GPR89B gene (MIM 612806). Voltage dependent anion channel required for acidification and functions of the Golgi apparatus that may function in counter-ion conductance.

Note: This product is for in vitro research use only