

Radixin Polyclonal Antibody

Catalog No: #41382

Package Size: #41382-1 50ul #41382-2 100ul

Orders: order@signalwayantibody.comSupport: tech@signalwayantibody.com

Description

Product Name	Radixin Polyclonal Antibody
Host Species	Rabbit
Clonality	Polyclonal
Purification	The antibody was affinity-purified from rabbit antiserum by affinity-chromatography using epitope-specific immunogen.
Applications	WB ELISA
Species Reactivity	Hu Ms Rt
Specificity	Radixin Polyclonal Antibody detects endogenous levels of Radixin protein.
Immunogen Type	peptide
Immunogen Description	Synthesized peptide derived from the Internal region of human Radixin.
Target Name	Radixin
Other Names	RDX; Radixin
Accession No.	Swiss-Prot: P35241NCBI Gene ID: 5962
Uniprot	P35241
GeneID	5962;
SDS-PAGE MW	69kd
Concentration	1mg/ml
Formulation	Liquid in PBS containing 50% glycerol, 0.5% BSA and 0.02% sodium azide.
Storage	Store at -20°C/1 year

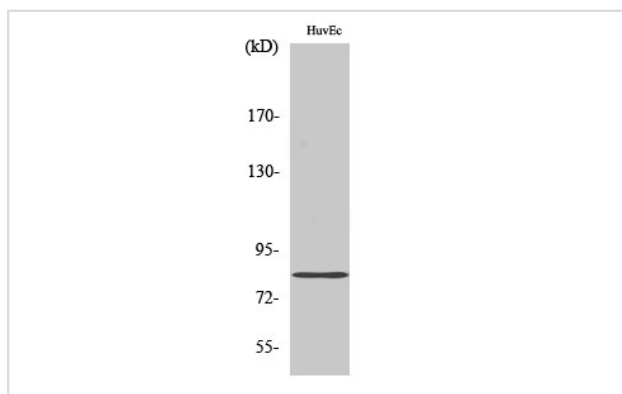
Application Details

Western Blot: 1/500 - 1/2000.

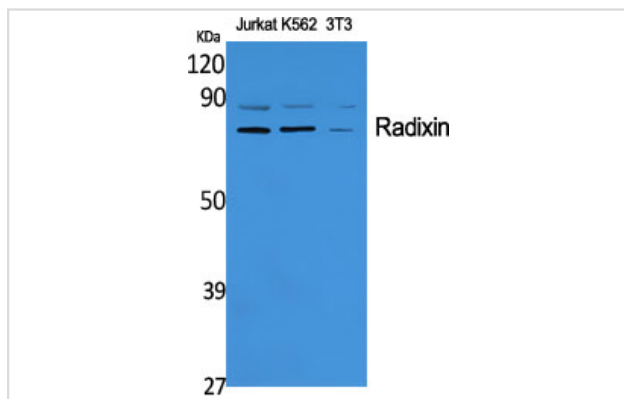
ELISA: 1/10000.

Not yet tested in other applications.

Images



Western Blot analysis of HuvEc cells using Radixin Polyclonal Antibody



Western Blot analysis of Jurkat cells using Radixin Polyclonal Antibody

Note: This product is for in vitro research use only