

Raf-1 Polyclonal Antibody

Catalog No: #41383

Package Size: #41383-1 50ul #41383-2 100ul

Orders: order@signalwayantibody.comSupport: tech@signalwayantibody.com

Description

Product Name	Raf-1 Polyclonal Antibody
Host Species	Rabbit
Clonality	Polyclonal
Purification	The antibody was affinity-purified from rabbit antiserum by affinity-chromatography using epitope-specific immunogen.
Applications	WB IHC ELISA
Species Reactivity	Hu Ms Rt
Specificity	Raf-1 Polyclonal Antibody detects endogenous levels of Raf-1 protein.
Immunogen Type	peptide
Immunogen Description	Synthesized peptide derived from human Raf-1 around the non-phosphorylation site of S43.
Target Name	Raf-1
Other Names	RAF1; RAF; RAF proto-oncogene serine/threonine-protein kinase; Proto-oncogene c-RAF; cRaf; Raf-1
Accession No.	Swiss-Prot: P04049NCBI Gene ID: 5894
Uniprot	P04049
GeneID	5894;
SDS-PAGE MW	73kd
Concentration	1mg/ml
Formulation	Liquid in PBS containing 50% glycerol, 0.5% BSA and 0.02% sodium azide.
Storage	Store at -20°C/1 year

Application Details

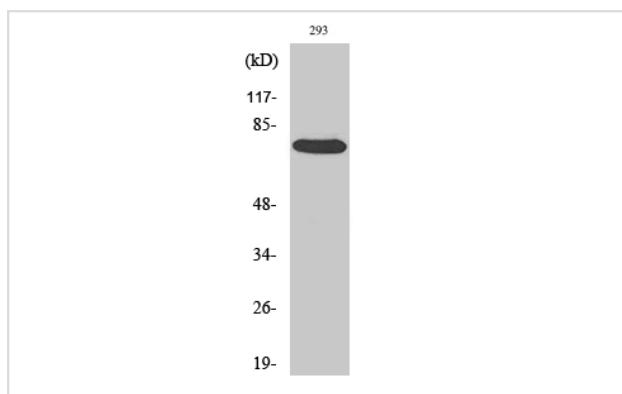
Western Blot: 1/500 - 1/2000.

Immunohistochemistry: 1/100 - 1/300.

ELISA: 1/5000.

Not yet tested in other applications.

Images



Western Blot analysis of 293 cells using Raf-1 Polyclonal Antibody

Note: This product is for in vitro research use only