

INSM1 Antibody

Catalog No: #47803

Orders: order@signalwayantibody.comSupport: tech@signalwayantibody.com

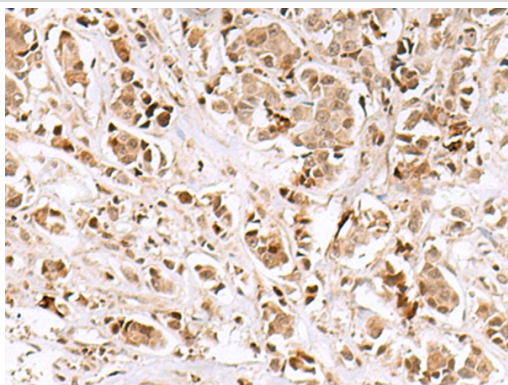
Description

Product Name	INSM1 Antibody
Host Species	Rabbit
Clonality	Polyclonal
Purification	Antigen affinity purification
Applications	IHC
Species Reactivity	Hu, Ms
Specificity	The antibody detects endogenous levels of total INSM1 protein.
Immunogen Type	Peptide
Immunogen Description	Synthetic peptide of human INSM1
Target Name	INSM1
Other Names	IA1; IA-1
Accession No.	Swiss-Prot#:Q01101NCBI Gene ID:3642Gene Accssion:NP_002187
Uniprot	Q01101
GeneID	3642;
Concentration	1.4
Formulation	Rabbit IgG in pH7.4 PBS, 0.05% NaN ₃ , 40% Glycerol.
Storage	Store at -20°C

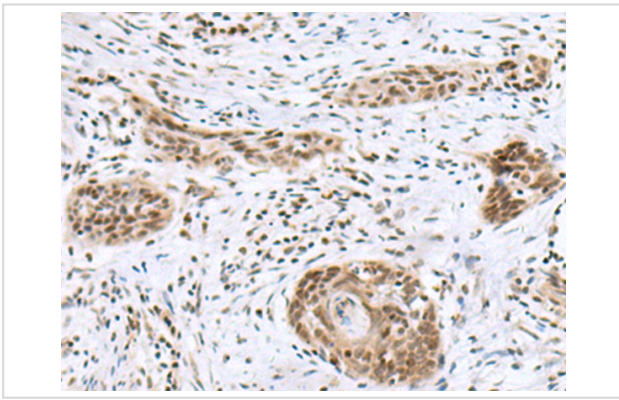
Application Details

IHC dilution:1: 50-300

Images



The image is immunohistochemistry of paraffin-embedded Human breast cancer tissue using 47803(INSM1 Antibody) at dilution 1/50.(Original magnification: 200)



The image is immunohistochemistry of paraffin-embedded Human esophagus cancer tissue using 47803(INSM1 Antibody) at dilution 1/50.(Original magnification: 200)

Background

Insulinoma-associated 1 (INSM1) gene is intronless and encodes a protein containing both a zinc finger DNA-binding domain and a putative prohormone domain. This gene is a sensitive marker for neuroendocrine differentiation of human lung tumors.

Note: This product is for in vitro research use only