

KBTBD11 Antibody

Catalog No: #47809

Orders: order@signalwayantibody.comSupport: tech@signalwayantibody.com

Description

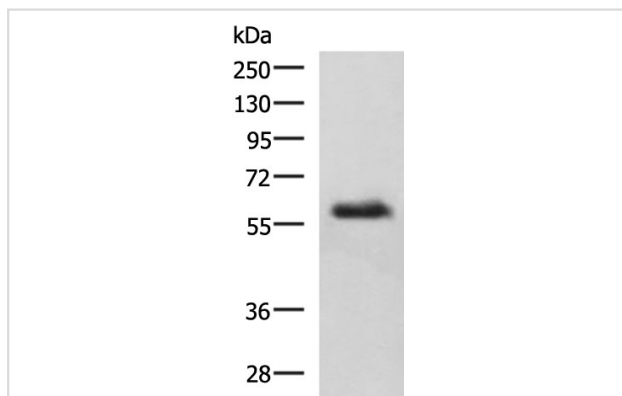
Product Name	KBTBD11 Antibody
Host Species	Rabbit
Clonality	Polyclonal
Purification	Antigen affinity purification
Applications	WB, IHC
Species Reactivity	Hu, Ms
Specificity	The antibody detects endogenous levels of total KBTBD11 protein.
Immunogen Type	Peptide
Immunogen Description	Synthetic peptide of human KBTBD11
Target Name	KBTBD11
Other Names	KLHDC7C
Accession No.	Swiss-Prot#:O94819NCBI Gene ID:9920Gene Accssion:NP_055682
Uniprot	O94819
GeneID	9920;
Calculated MW	66 kDa
Concentration	1 mg/ml
Formulation	Rabbit IgG in pH7.4 PBS, 0.05% NaN ₃ , 40% Glycerol.
Storage	Store at -20°C

Application Details

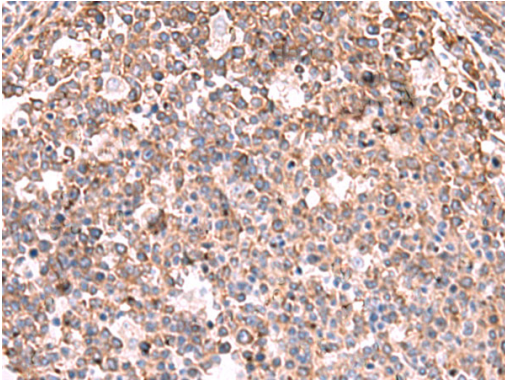
WB dilution:1:1000-5000

IHC dilution:1: 30-150

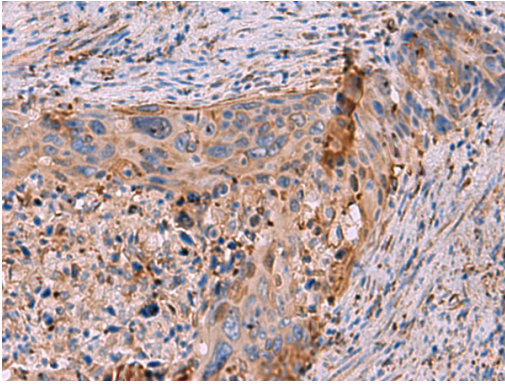
Images



Gel: 8%SDS-PAGE, Lysate: 40 µg, Lane: Human metastatic papillary carcinoma(thyroid cancer) tissue lysate , Primary antibody:47809((KBTBD11 Antibody) at dilution 1/800, Secondary antibody: Goat anti rabbit IgG at 1/5000 dilution, Exposure time: 2 minutes



The image is immunohistochemistry of paraffin-embedded Human tonsil tissue using 47809(KBTBD11 Antibody) at dilution 1/35.(Original magnification: 200)



The image is immunohistochemistry of paraffin-embedded Human cervical cancer tissue using 47809(KBTBD11 Antibody) at dilution 1/35.(Original magnification: 200)

Background

The function of this protein remains unknown.

Note: This product is for in vitro research use only