

Raf-B Polyclonal Antibody

Catalog No: #41385

Package Size: #41385-1 50ul #41385-2 100ul

Orders: order@signalwayantibody.comSupport: tech@signalwayantibody.com

Description

Product Name	Raf-B Polyclonal Antibody
Host Species	Rabbit
Clonality	Polyclonal
Purification	The antibody was affinity-purified from rabbit antiserum by affinity-chromatography using epitope-specific immunogen.
Applications	WB IHC IF ELISA
Species Reactivity	Hu Ms
Specificity	Raf-B Polyclonal Antibody detects endogenous levels of Raf-B protein.
Immunogen Type	peptide
Immunogen Description	Synthesized peptide derived from the Internal region of human Raf-B.
Target Name	Raf-B
Other Names	BRAF; BRAF1; RAFB1; Serine/threonine-protein kinase B-raf; Proto-oncogene B-Raf; p94; v-Raf murine sarcoma viral oncogene homolog B1
Accession No.	Swiss-Prot: P15056NCBI Gene ID: 673
Uniprot	P15056
GeneID	673;
SDS-PAGE MW	62kd
Concentration	1mg/ml
Formulation	Liquid in PBS containing 50% glycerol, 0.5% BSA and 0.02% sodium azide.
Storage	Store at -20°C/1 year

Application Details

Western Blot: 1/500 - 1/2000.

Immunohistochemistry: 1/100 - 1/300.

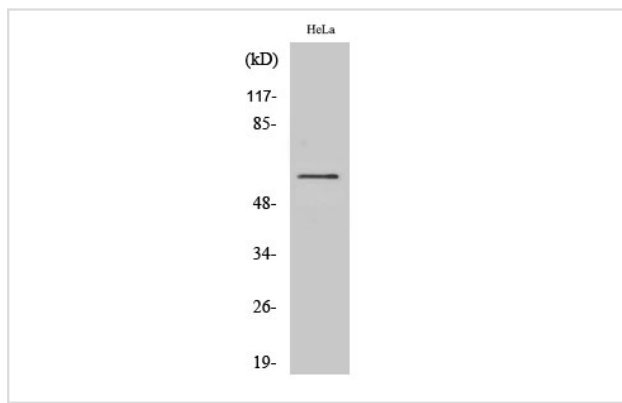
Immunofluorescence: 1/200 - 1/1000.

ELISA: 1/20000.

Not yet tested in other applications.

Images

Western Blot analysis of HeLa cells using Raf-B Polyclonal Antibody



Note: This product is for in vitro research use only