

Rabphilin 3A (phospho-Ser237) Antibody

Catalog No: #13300

Orders: order@signalwayantibody.comSupport: tech@signalwayantibody.com

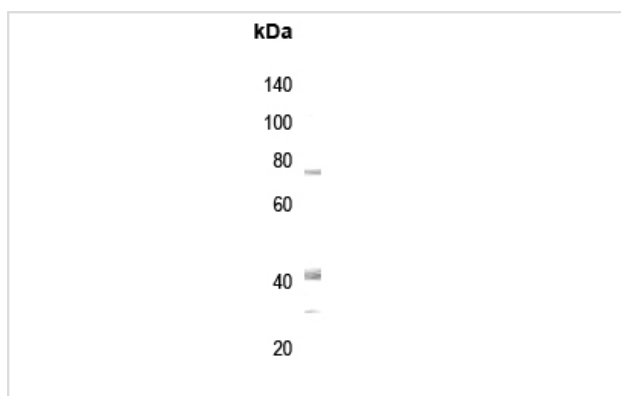
Description

Product Name	Rabphilin 3A (phospho-Ser237) Antibody
Host Species	Rabbit
Clonality	Polyclonal
Purification	The antibody was purified by immunogen affinity chromatography.
Applications	WB IHC IF
Species Reactivity	Hu,Ms,Rt
Specificity	Recognizes endogenous levels of Rabphilin 3A (phospho-Ser237) protein.
Immunogen Description	KLH-conjugated synthetic peptide encompassing a sequence within the center region of human RPH3A.
Target Name	RPH3A
Other Names	KIAA0985; Rabphilin-3A; Exophilin-1
Accession No.	Swiss-Prot#:Q9Y2J0NCBI Gene ID:22895
Uniprot	Q9Y2J0
GeneID	22895;
Calculated MW	76KD
Concentration	1 mg/ml
Formulation	Rabbit IgG in phosphate buffered saline (without Mg ²⁺ and Ca ²⁺), pH 7.4, 150mM NaCl, 0.02% sodium azide and 50% glycerol.
Storage	Store at -20°C

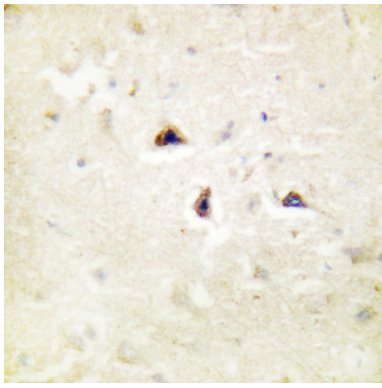
Application Details

Western blotting:1:500 - 1:1000Immunohistochemistry:1:50 - 1:100Immunofluorescence:1:100 - 1:300

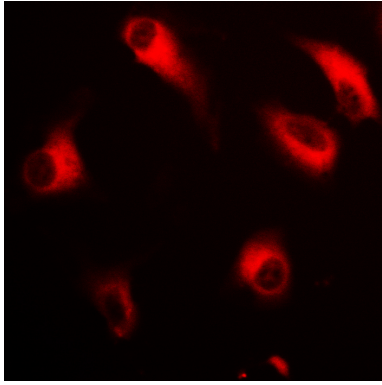
Images



Western blot analysis of Rabphilin 3A (phospho-Ser237) expression in Raw264.7 Calyculin treated whole cell lysates.



Immunohistochemical analysis of Rabphilin 3A (phospho-Ser237) staining in human brain formalin fixed paraffin embedded tissue section. The section was then incubated with the antibody at room temperature and detected using an HRP conjugated compact polymer system. DAB was used as the chromogen. The section was then counterstained with haematoxylin and mounted with DPX.



Immunofluorescent analysis of Rabphilin 3A (phospho-hospho-Ser237) staining in HeLa cells. Formalin-fixed cells were permeabilized with 0.1% Triton X-100 in TBS for 5-10 minutes and blocked with 3% BSA-PBS for 30 minutes at room temperature. Cells were probed with the primary antibody in 3% BSA-PBS and incubated overnight at 4 C in a humidified chamber. Cells were washed with PBST and incubated with Alexa Fluor 647-conjugated secondary antibody (red) in PBS at room temperature in the dark.

Note: This product is for in vitro research use only