

TPL2 (phospho-Thr290) Antibody

Catalog No: #13304

Orders: order@signalwayantibody.comSupport: tech@signalwayantibody.com

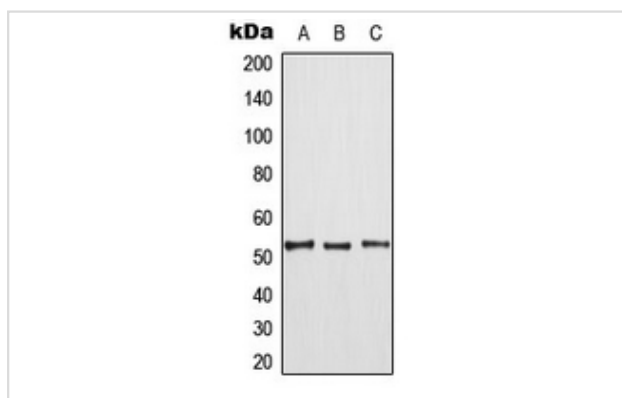
Description

Product Name	TPL2 (phospho-Thr290) Antibody
Host Species	Rabbit
Clonality	Polyclonal
Purification	The antibody was purified by immunogen affinity chromatography.
Applications	WB IHC IF
Species Reactivity	Hu,Ms,Rt
Specificity	Recognizes endogenous levels of TPL2 (phospho-Thr290) protein.
Immunogen Description	KLH-conjugated synthetic peptide encompassing a sequence within the center region of human TPL2.
Target Name	MAP3K8
Other Names	COT; ESTF; Mitogen-activated protein kinase kinase kinase 8; Cancer Osaka thyroid oncogene; Proto-oncogene c-Cot; Serine/threonine-protein kinase cot; Tumor progression locus 2; TPL-2
Accession No.	Swiss-Prot#:P41279NCBI Gene ID:1326
Uniprot	P41279
GeneID	1326;
Calculated MW	53KD
Concentration	1 mg/ml
Formulation	Rabbit IgG in phosphate buffered saline (without Mg ²⁺ and Ca ²⁺), pH 7.4, 150mM NaCl, 0.02% sodium azide and 50% glycerol.
Storage	Store at -20°C

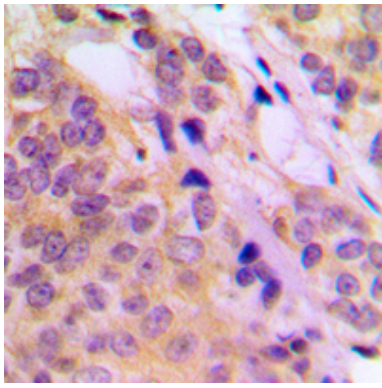
Application Details

Western blotting:1:500 - 1:1000Immunohistochemistry:1:50 - 1:100Immunofluorescence:1:100 - 1:300

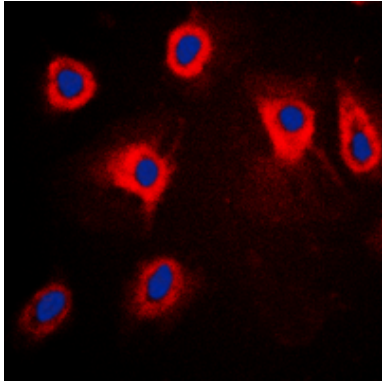
Images



Western blot analysis of TPL2 (phospho-Thr290) expression in HepG2, mouse liver, rat liver whole cell lysates.



Immunohistochemical analysis of TPL2 (phospho-Thr290) staining in human breast cancer formalin fixed paraffin embedded tissue section. The section was then incubated with the antibody at room temperature and detected using an HRP conjugated compact polymer system. DAB was used as the chromogen. The section was then counterstained with haematoxylin and mounted with DPX.



Immunofluorescent analysis of TPL2 (phospho-Thr290) staining in HepG2 cells. Formalin-fixed cells were permeabilized with 0.1% Triton X-100 in TBS for 5-10 minutes and blocked with 3% BSA-PBS for 30 minutes at room temperature. Cells were probed with the primary antibody in 3% BSA-PBS and incubated overnight at 4 C in a humidified chamber. Cells were washed with PBST and incubated with a DyLight 594-conjugated secondary antibody (red) in PBS at room temperature in the dark. DAPI was used to stain the cell nuclei (blue).

Note: This product is for in vitro research use only