

Ah Receptor (phospho-Ser36) Antibody

Catalog No: #13305

Orders: order@signalwayantibody.com

Support: tech@signalwayantibody.com

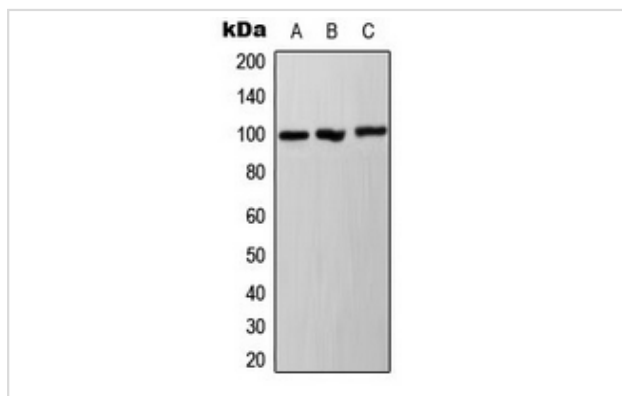
Description

Product Name	Ah Receptor (phospho-Ser36) Antibody
Host Species	Rabbit
Clonality	Polyclonal
Purification	The antibody was purified by immunogen affinity chromatography.
Applications	WB IHC
Species Reactivity	Hu,Ms,Rt
Specificity	Recognizes endogenous levels of Ah Receptor (phospho-Ser36) protein.
Immunogen Description	KLH-conjugated synthetic peptide encompassing a sequence within the N-term region of human Ah Receptor.
Target Name	AHR
Other Names	AHR; BHLHE76; Aryl hydrocarbon receptor; Ah receptor; AhR; Class E basic helix-loop-helix protein 76; bHLHe76; AHRR; BHLHE77; KIAA1234; Aryl hydrocarbon receptor repressor; AhR repressor; AhRR; Class E basic helix-loop-helix protein 77; bHLHe77
Accession No.	Swiss-Prot#:P35869; A9YTQ3NCBI Gene ID:196; 57491
Uniprot	P35869
GeneID	196;
Calculated MW	100KD
Concentration	1 mg/ml
Formulation	Rabbit IgG in phosphate buffered saline (without Mg ²⁺ and Ca ²⁺), pH 7.4, 150mM NaCl, 0.02% sodium azide and 50% glycerol.
Storage	Store at -20°C

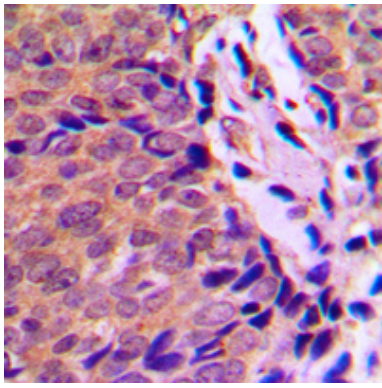
Application Details

Western blotting:1:500 - 1:1000Immunohistochemistry:1:50 - 1:100

Images



Western blot analysis of Ah Receptor (phospho-Ser36) expression in A431, HepG2, NIH3T3 whole cell lysates.



Immunohistochemical analysis of Ah Receptor (phospho-Ser36) staining in human breast cancer formalin fixed paraffin embedded tissue section. The section was then incubated with the antibody at room temperature and detected using an HRP conjugated compact polymer system. DAB was used as the chromogen. The section was then counterstained with haematoxylin and mounted with DPX.

Note: This product is for in vitro research use only