

Rag A/B Polyclonal Antibody

Catalog No: #41386

Package Size: #41386-1 50ul #41386-2 100ul

Orders: order@signalwayantibody.comSupport: tech@signalwayantibody.com

Description

Product Name	Rag A/B Polyclonal Antibody
Host Species	Rabbit
Clonality	Polyclonal
Purification	The antibody was affinity-purified from rabbit antiserum by affinity-chromatography using epitope-specific immunogen.
Applications	WB IHC ELISA
Species Reactivity	Hu Ms Rt
Specificity	Rag A/B Polyclonal Antibody detects endogenous levels of Rag A/B protein.
Immunogen Type	peptide
Immunogen Description	Synthesized peptide derived from the C-terminal region of human Rag A/B.
Target Name	Rag A/B
Other Names	RRAGA; Ras-related GTP-binding protein A; Rag A; RagA; Adenovirus E3 14.7 kDa-interacting protein 1; FIP-1; RRAGB; Ras-related GTP-binding protein B; Rag B; RagB
Accession No.	Swiss-Prot: Q7L523/Q5VZM2NCBI Gene ID: 10670/10325
Uniprot	Q7L523
GeneID	10670;
SDS-PAGE MW	34kd
Concentration	1mg/ml
Formulation	Liquid in PBS containing 50% glycerol, 0.5% BSA and 0.02% sodium azide.
Storage	Store at -20°C/1 year

Application Details

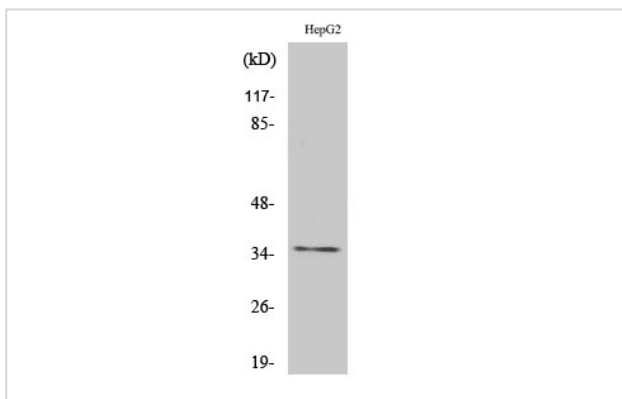
Western Blot: 1/500 - 1/2000.

Immunohistochemistry: 1/100 - 1/300.

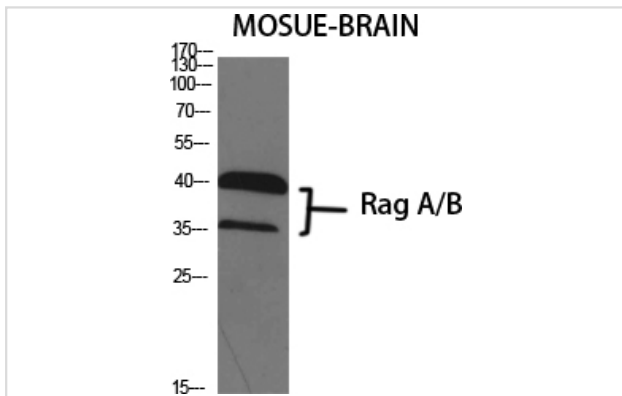
ELISA: 1/20000.

Not yet tested in other applications.

Images



Western Blot analysis of HepG2 cells using Rag A/B Polyclonal Antibody



Western Blot analysis of Jurkat NIH-3T3 cells using Rag A/B Polyclonal Antibody

Note: This product is for in vitro research use only