

PRKD1/2/3 (phospho-Ser738/Ser742) Antibody

Catalog No: #13309

Orders: order@signalwayantibody.comSupport: tech@signalwayantibody.com

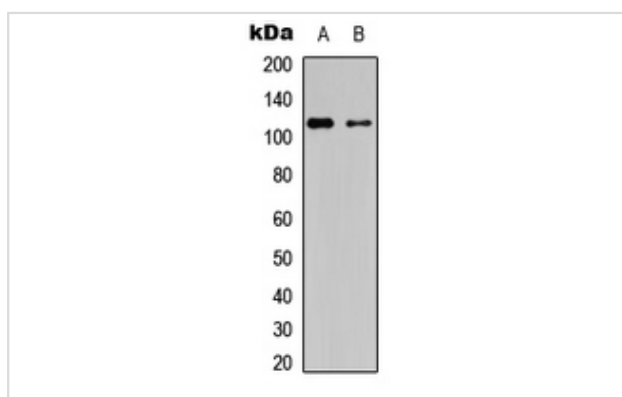
Description

Product Name	PRKD1/2/3 (phospho-Ser738/Ser742) Antibody
Host Species	Rabbit
Clonality	Polyclonal
Purification	The antibody was purified by immunogen affinity chromatography.
Applications	WB IHC
Species Reactivity	Hu,Ms,Rt
Specificity	Recognizes endogenous levels of PRKD1/2/3 (phospho-Ser738/Ser742) protein.
Immunogen Description	KLH-conjugated synthetic peptide encompassing a sequence within the C-term region of human PRKD1/2/3.
Target Name	PRKD1; PRKD2; PRKD3
Other Names	PRKD1; PKD; PKD1; PRKCM; Serine/threonine-protein kinase D1; Protein kinase C mu type; Protein kinase D; nPKC-D1; nPKC-mu; PRKD2; PKD2; HSPC187; Serine/threonine-protein kinase D2; nPKC-D2; PRKD3; EPK2; PRKCN; Serine/threonine-protein kinase D3; Protein kinase C nu type; Protein kinase EPK2; nPKC-nu
Accession No.	Swiss-Prot#: Q15139; Q9BZL6; O94806NCBI Gene ID: 5587; 25865; 23683
Uniprot	Q15139
GeneID	5587;
Calculated MW	115KD
Concentration	1 mg/ml
Formulation	Rabbit IgG in phosphate buffered saline (without Mg ²⁺ and Ca ²⁺), pH 7.4, 150mM NaCl, 0.02% sodium azide and 50% glycerol.
Storage	Store at -20°C

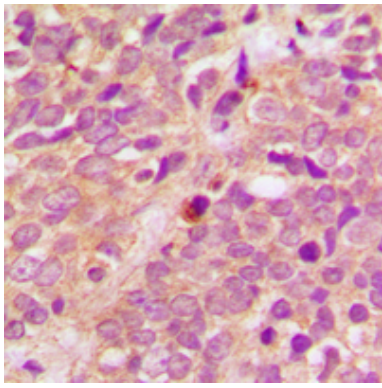
Application Details

Western blotting: 1:500 - 1:1000 Immunohistochemistry: 1:50 - 1:100

Images



Western blot analysis of PRKD1/2/3 (phospho-Ser738/S742) expression in HT29, rat astrocytes whole cell lysates.



Immunohistochemical analysis of PRKD1/2/3 (phospho-Ser738/Ser742) staining in human breast cancer formalin fixed paraffin embedded tissue section. The section was then incubated with the antibody at room temperature and detected using an HRP conjugated compact polymer system. DAB was used as the chromogen. The section was then counterstained with haematoxylin and mounted with DPX.

Note: This product is for in vitro research use only