

PKC iota/zeta (phospho-Thr412/410) Antibody

Catalog No: #13310

Orders: order@signalwayantibody.com

Support: tech@signalwayantibody.com

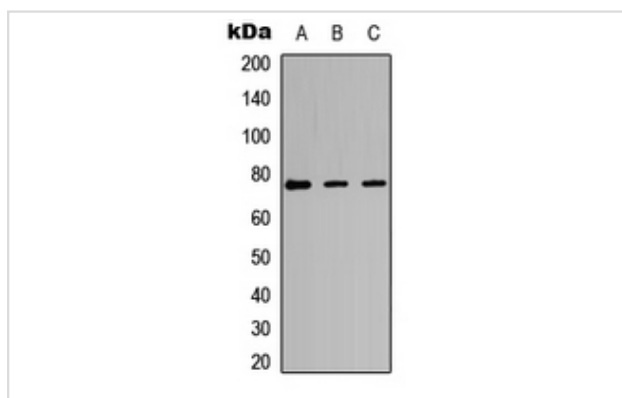
Description

Product Name	PKC iota/zeta (phospho-Thr412/410) Antibody
Host Species	Rabbit
Clonality	Polyclonal
Purification	The antibody was purified by immunogen affinity chromatography.
Applications	WB IHC IF
Species Reactivity	Hu,Ms,Rt
Specificity	Recognizes endogenous levels of PKC iota/zeta (phospho-Thr412/410) protein.
Immunogen Description	KLH-conjugated synthetic peptide encompassing a sequence within the center region of human PKC iota/zeta.
Target Name	PRKCI; PRKCZ
Other Names	DXS1179E; Protein kinase C iota type; Atypical protein kinase C-lambda/iota; PRKC-lambda/iota; aPKC-lambda/iota; nPKC-iota; PKC2; Protein kinase C zeta type; nPKC-zeta
Accession No.	Swiss-Prot#:P41743; Q05513NCBI Gene ID:5584; 5590
Uniprot	P41743
GeneID	5584;
Calculated MW	78KD
Concentration	1 mg/ml
Formulation	Rabbit IgG in phosphate buffered saline (without Mg ²⁺ and Ca ²⁺), pH 7.4, 150mM NaCl, 0.02% sodium azide and 50% glycerol.
Storage	Store at -20°C

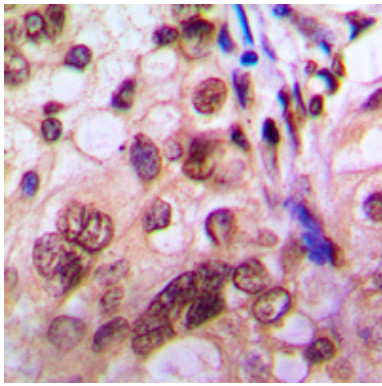
Application Details

Western blotting:1:500 - 1:1000Immunohistochemistry:1:50 - 1:100Immunofluorescence:1:100 - 1:300

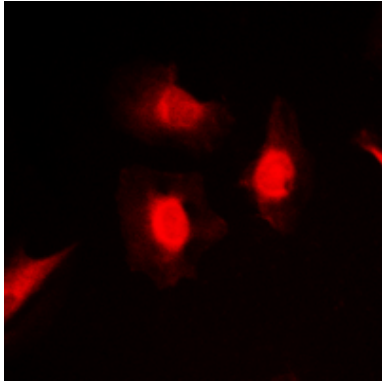
Images



Western blot analysis of PKC iota/zeta (phospho-Thr412/410) expression in MCF7 TNF α -treated, NIH3T3 LPS-treated, PC12 UV-treated whole cell lysates.



Immunohistochemical analysis of PKC iota/zeta (phospho-Thr412/410) staining in human breast cancer formalin fixed paraffin embedded tissue section. The section was then incubated with the antibody at room temperature and detected using an HRP conjugated compact polymer system. DAB was used as the chromogen. The section was then counterstained with haematoxylin and mounted with DPX.



Immunofluorescent analysis of PKC iota/zeta (phospho-Thr412/410) staining in MCF7 cells. Formalin-fixed cells were permeabilized with 0.1% Triton X-100 in TBS for 5-10 minutes and blocked with 3% BSA-PBS for 30 minutes at room temperature. Cells were probed with the primary antibody in 3% BSA-PBS and incubated overnight at 4 C in a humidified chamber. Cells were washed with PBST and incubated with a DyLight 594-conjugated secondary antibody (red) in PBS at room temperature in the dark.

Note: This product is for in vitro research use only