

Ezrin/Radixin/Moesin (phospho-Thr567/564/558) Antibody

Catalog No: #13313

Orders: order@signalwayantibody.comSupport: tech@signalwayantibody.com

Description

Product Name	Ezrin/Radixin/Moesin (phospho-Thr567/564/558) Antibody
Host Species	Rabbit
Clonality	Polyclonal
Purification	The antibody was affinity-purified from rabbit antiserum by affinity-chromatography using epitope-specific immunogen.
Applications	WB IHC IF
Species Reactivity	Hu,Ms,Rt
Specificity	Phospho-Moesin/Ezrin/Radixin (T558) Polyclonal Antibody detects endogenous levels of Moesin/Ezrin/Radixin protein only when phosphorylated at T558.
Immunogen Description	The antiserum was produced against synthesized peptide derived from human Moesin/Ezrin/Radixin around the phosphorylation site of Thr558.
Target Name	MSN; RDX; EZR
Other Names	MSN; Moesin; Membrane-organizing extension spike protein; RDX; Radixin; EZR; VIL2; Ezrin; Cytovillin; Villin-2; p81
Accession No.	Swiss-Prot#:P26038; P35241; P15311NCBI Gene ID:4478; 5962
Uniprot	P26038
GeneID	4478;
Calculated MW	67kD
Concentration	1 mg/ml
Formulation	Liquid in PBS containing 50% glycerol, 0.5% BSA and 0.02% sodium azide.
Storage	Store at -20°C

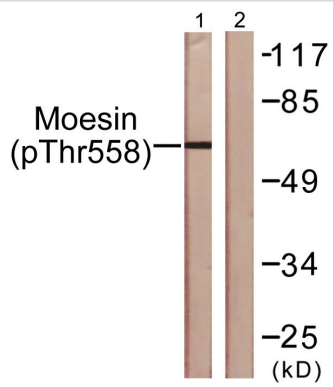
Application Details

WB 1:500 - 1:2000

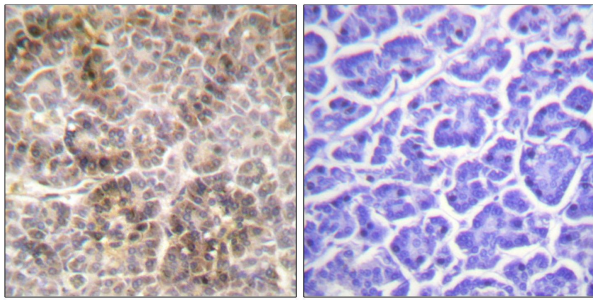
IHC 1:100 - 1:300

IF 1:200 - 1:1000

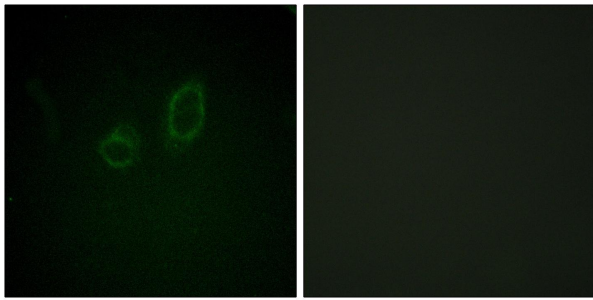
Images



Western blot analysis of lysates from NIH/3T3 cells. The lane on the right is blocked with the phospho peptide.



Immunohistochemistry analysis of paraffin-embedded human pancreas. The picture on the right is blocked with the phospho peptide.



Immunofluorescence analysis of A549 cells. The picture on the right is blocked with the phospho peptide.

Note: This product is for in vitro research use only