

## NEK9 (phospho-Thr210) Antibody

Catalog No: #13314

Orders: [order@signalwayantibody.com](mailto:order@signalwayantibody.com)Support: [tech@signalwayantibody.com](mailto:tech@signalwayantibody.com)

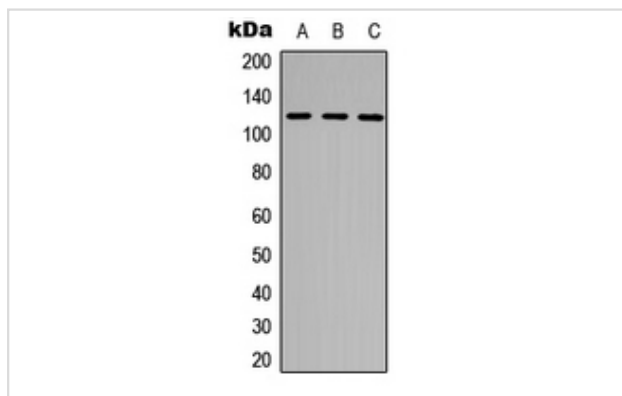
## Description

Product Name	NEK9 (phospho-Thr210) Antibody
Host Species	Rabbit
Clonality	Polyclonal
Purification	The antibody was purified by immunogen affinity chromatography.
Applications	WB IHC IF
Species Reactivity	Hu,Ms
Specificity	Recognizes endogenous levels of NEK9 (phospho-Thr210) protein.
Immunogen Description	KLH-conjugated synthetic peptide encompassing a sequence within the center region of human NEK9.
Target Name	NEK9
Other Names	KIAA1995; NEK8; NERCC; Serine/threonine-protein kinase Nek9; Nercc1 kinase; Never in mitosis A-related kinase 9; NimA-related protein kinase 9; NimA-related kinase 8; Nek8
Accession No.	Swiss-Prot#:Q8TD19NCBI Gene ID:91754
Uniprot	Q8TD19
GeneID	91754;
Calculated MW	120KD
Concentration	1 mg/ml
Formulation	Rabbit IgG in phosphate buffered saline (without Mg <sup>2+</sup> and Ca <sup>2+</sup> ), pH 7.4, 150mM NaCl, 0.02% sodium azide and 50% glycerol.
Storage	Store at -20°C

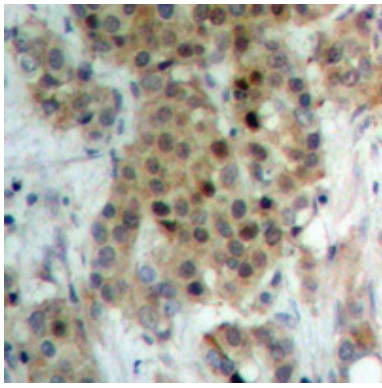
## Application Details

Western blotting:1:500 - 1:1000Immunohistochemistry:1:50 - 1:100Immunofluorescence:1:100 - 1:300

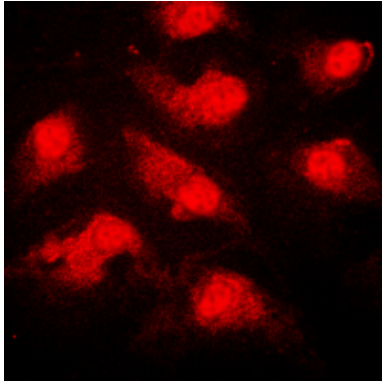
## Images



Western blot analysis of NEK9 (phospho-Thr210) expression in THP1, HepG2, HeLa whole cell lysates.



Immunohistochemical analysis of NEK9 (phospho-Thr210) staining in human breast cancer formalin fixed paraffin embedded tissue section. The section was then incubated with the antibody at room temperature and detected using an HRP conjugated compact polymer system. DAB was used as the chromogen. The section was then counterstained with haematoxylin and mounted with DPX.



Immunofluorescent analysis of NEK9 (phospho-Thr210) staining in THP1 cells. Formalin-fixed cells were permeabilized with 0.1% Triton X-100 in TBS for 5-10 minutes and blocked with 3% BSA-PBS for 30 minutes at room temperature. Cells were probed with the primary antibody in 3% BSA-PBS and incubated overnight at 4 C in a hidified chamber. Cells were washed with PBST and incubated with a DyLight 594-conjugated secondary antibody (red) in PBS at room temperature in the dark.

---

Note: This product is for in vitro research use only