

RAD51A (phospho-Tyr315) Antibody

Catalog No: #13315

Orders: order@signalwayantibody.comSupport: tech@signalwayantibody.com

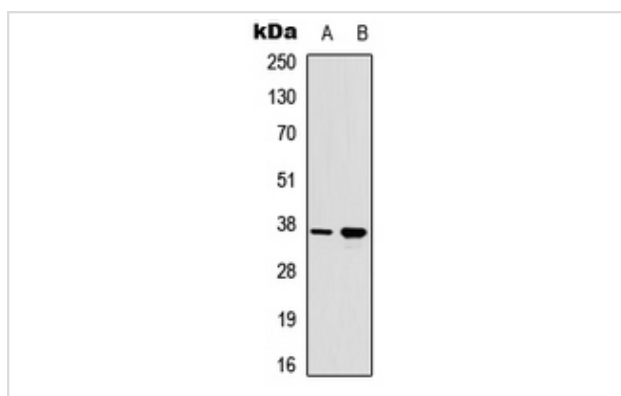
Description

Product Name	RAD51A (phospho-Tyr315) Antibody
Host Species	Rabbit
Clonality	Polyclonal
Purification	The antibody was purified by immunogen affinity chromatography.
Applications	WB IHC
Species Reactivity	Hu,Ms
Specificity	Recognizes endogenous levels of RAD51A (phospho-Tyr315) protein.
Immunogen Description	KLH-conjugated synthetic peptide encompassing a sequence within the C-term region of human RAD51A.
Target Name	RAD51
Other Names	RAD51A; RECA; DNA repair protein RAD51 homolog 1; HsRAD51; hRAD51; RAD51 homolog A
Accession No.	Swiss-Prot#:Q06609NCBI Gene ID:5888
Uniprot	Q06609
GeneID	5888;
Calculated MW	37KD
Concentration	1 mg/ml
Formulation	Rabbit IgG in phosphate buffered saline (without Mg ²⁺ and Ca ²⁺), pH 7.4, 150mM NaCl, 0.02% sodium azide and 50% glycerol.
Storage	Store at -20°C

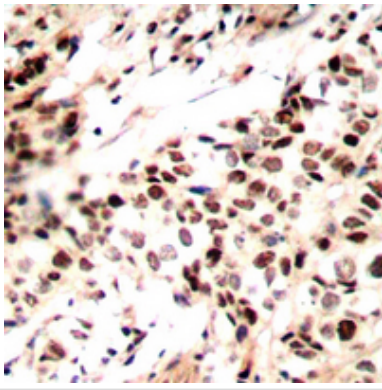
Application Details

Western blotting:1:500 - 1:1000Immunohistochemistry:1:50 - 1:100

Images



Western blot analysis of RAD51A (phospho-Tyr315) expression in HeLa UV-treated, HEK293T UV-treated whole cell lysates.



Immunohistochemical analysis of RAD51A (phospho-Tyr315) staining in human breast cancer formalin fixed paraffin embedded tissue section. The section was then incubated with the antibody at room temperature and detected using an HRP conjugated compact polymer system. DAB was used as the chromogen. The section was then counterstained with haematoxylin and mounted with DPX.

Note: This product is for in vitro research use only