

## RAGE Polyclonal Antibody

Catalog No: #41387

Package Size: #41387-1 50ul #41387-2 100ul

Orders: order@signalwayantibody.com

Support: tech@signalwayantibody.com

## Description

Product Name	RAGE Polyclonal Antibody
Host Species	Rabbit
Clonality	Polyclonal
Purification	The antibody was affinity-purified from rabbit antiserum by affinity-chromatography using epitope-specific immunogen.
Applications	WB IHC ELISA
Species Reactivity	Hu Ms Rt
Specificity	RAGE Polyclonal Antibody detects endogenous levels of RAGE protein.
Immunogen Description	Synthesized peptide derived from the Internal region of human RAGE.
Target Name	RAGE
Other Names	AGER; RAGE; Advanced glycosylation end product-specific receptor; Receptor for advanced glycosylation end products
Accession No.	Swiss-Prot: Q15109NCBI Gene ID: 177
Uniprot	Q15109
GeneID	177;
SDS-PAGE MW	37kd
Concentration	1mg/ml
Formulation	Liquid in PBS containing 50% glycerol, 0.5% BSA and 0.02% sodium azide.
Storage	Store at -20°C/1 year

## Application Details

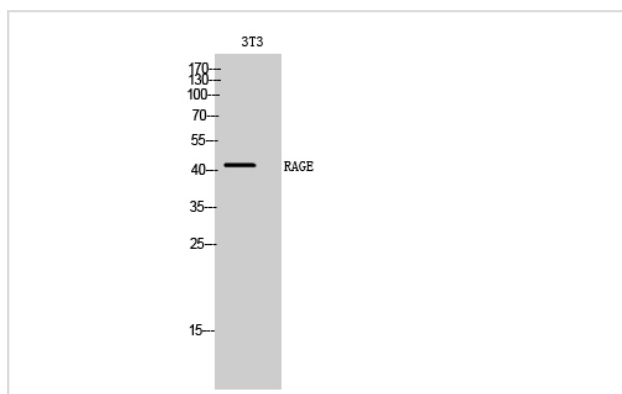
Western Blot: 1/500 - 1/2000.

Immunohistochemistry: 1/100 - 1/300.

ELISA: 1/20000.

Not yet tested in other applications.

## Images



Western Blot analysis of 3T3 cells using RAGE Polyclonal Antibody

---

Note: This product is for in vitro research use only