

## RSK1/2/3 (phospho-Thr573/570/577) Antibody

Catalog No: #13316

Orders: [order@signalwayantibody.com](mailto:order@signalwayantibody.com)Support: [tech@signalwayantibody.com](mailto:tech@signalwayantibody.com)

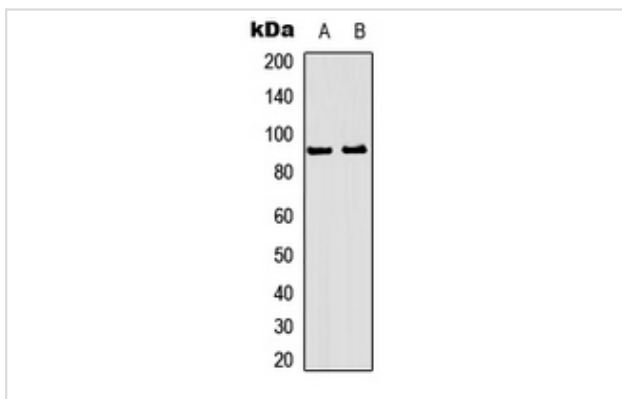
## Description

Product Name	RSK1/2/3 (phospho-Thr573/570/577) Antibody
Host Species	Rabbit
Clonality	Polyclonal
Purification	The antibody was purified by immunogen affinity chromatography.
Applications	WB IHC IF
Species Reactivity	Hu,Ms,Rt
Specificity	Recognizes endogenous levels of RSK1/2/3 (phospho-Thr573/570/577) protein.
Immunogen Description	KLH-conjugated synthetic peptide encompassing a sequence within the C-term region of human RSK1/2/3.
Target Name	RPS6KA1; RPS6KA2; RPS6KA3
Other Names	MAPKAPK1A; RSK1; Ribosomal protein S6 kinase alpha-1; S6K-alpha-1; 90 kDa ribosomal protein S6 kinase 1; p90-RSK 1; p90RSK1; p90S6K; MAP kinase-activated protein kinase 1a; MAPK-activated protein kinase 1a; MAPKAP kinase 1a; MAPKAPK-1a; Ribosomal S6 kinase 1; RSK-1; MAPKAPK1C; RSK3; Ribosomal protein S6 kinase alpha-2; S6K-alpha-2; 90 kDa ribosomal protein S6 kinase 2; p90-RSK 2; p90RSK2; MAP kinase-activated protein kinase 1c; MAPK-activated protein kinase 1c; MAPKAP kinase 1c; MAPKAPK-1c; Ribosomal S6 kinase 3; RSK-3; pp90RSK3; ISPK1; MAPKAPK1B; RSK2; Ribosomal protein S6 kinase alpha-3; S6K-alpha-3; 90 kDa ribosomal protein S6 kinase 3; p90-RSK 3; p90RSK3; Insulin-stimulated protein kinase 1; ISPK-1; MAP kinase-activated protein kinase 1b; MAPK-activated protein kinase 1b; MAPKAP kinase 1b; MAPKAPK-1b; Ribosomal S6 kinase 2; RSK-2; pp90RSK2
Accession No.	Swiss-Prot#:Q15418; Q15349; P51812NCBI Gene ID:6195; 6196; 6197
Uniprot	Q15418
GeneID	6195;
Calculated MW	90KD
Concentration	1 mg/ml
Formulation	Rabbit IgG in phosphate buffered saline (without Mg <sup>2+</sup> and Ca <sup>2+</sup> ), pH 7.4, 150mM NaCl, 0.02% sodium azide and 50% glycerol.
Storage	Store at -20°C

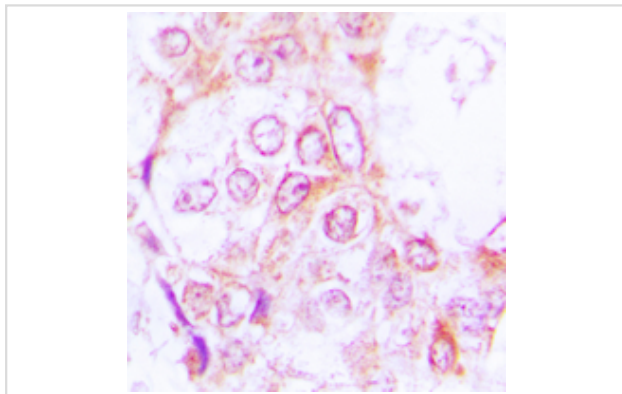
## Application Details

Western blotting:1:500 - 1:1000Immunohistochemistry:1:50 - 1:100Immunofluorescence:1:100 - 1:300

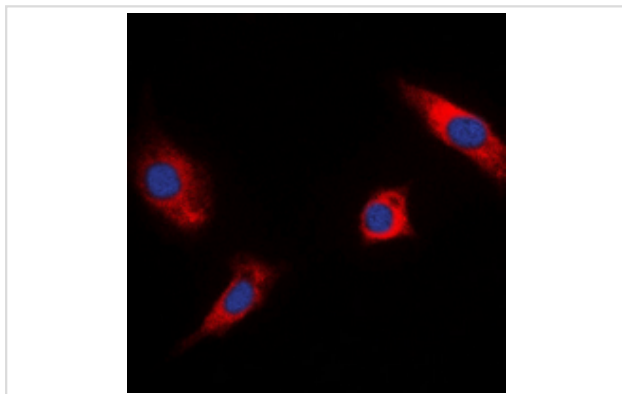
## Images



Western blot analysis of RSK1/2/3 (phospho-Thr573/570/577) expression in HeLa, HepG2 whole cell lysates.



Immunohistochemical analysis of RSK1/2/3 (phospho-Thr573/570/577) staining in human lung cancer formalin fixed paraffin embedded tissue section. The section was then incubated with the antibody at room temperature and detected using an HRP conjugated compact polymer system. DAB was used as the chromogen. The section was then counterstained with haematoxylin and mounted with DPX.



Immunofluorescent analysis of RSK1/2/3 (phospho-Thr573/570/577) staining in HeLa cells. Formalin-fixed cells were permeabilized with 0.1% Triton X-100 in TBS for 5-10 minutes and blocked with 3% BSA-PBS for 30 minutes at room temperature. Cells were probed with the primary antibody in 3% BSA-PBS and incubated overnight at 4 C in a humidified chamber. Cells were washed with PBST and incubated with a DyLight 594-conjugated secondary antibody (red) in PBS at room temperature in the dark. DAPI was used to stain the cell nuclei (blue).

Note: This product is for in vitro research use only