

## HSP20 (phospho-Ser16) Antibody

Catalog No: #13317

Orders: [order@signalwayantibody.com](mailto:order@signalwayantibody.com)Support: [tech@signalwayantibody.com](mailto:tech@signalwayantibody.com)

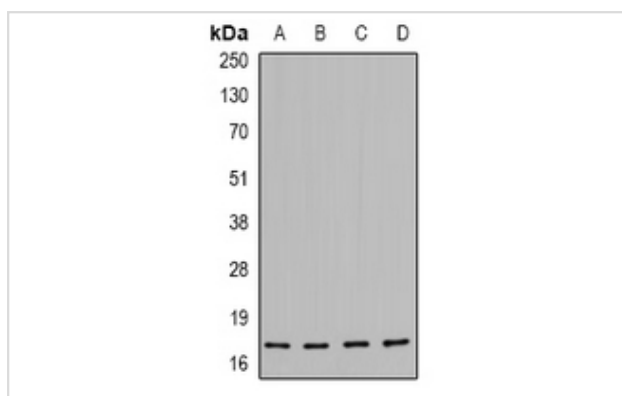
## Description

Product Name	HSP20 (phospho-Ser16) Antibody
Host Species	Rabbit
Clonality	Polyclonal
Purification	The antibody was purified by immunogen affinity chromatography.
Applications	WB IHC IF
Species Reactivity	Hu,Ms,Rt
Specificity	Recognizes endogenous levels of HSP20 (phospho-Ser16) protein.
Immunogen Description	KLH-conjugated synthetic peptide encompassing a sequence within the N-term region of human HSP20.
Target Name	HSPB6
Other Names	Heat shock protein beta-6; HspB6; Heat shock 20 kDa-like protein p20
Accession No.	Swiss-Prot#:O14558NCBI Gene ID:126393
Uniprot	O14558
GeneID	126393;
Calculated MW	17KD
Concentration	1 mg/ml
Formulation	Rabbit IgG in phosphate buffered saline (without Mg <sup>2+</sup> and Ca <sup>2+</sup> ), pH 7.4, 150mM NaCl, 0.02% sodium azide and 50% glycerol.
Storage	Store at -20°C

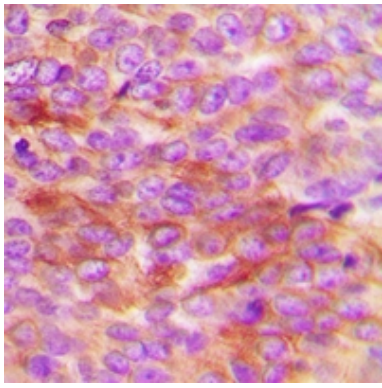
## Application Details

Western blotting:1:500 - 1:1000Immunohistochemistry:1:50 - 1:100Immunofluorescence:1:100 - 1:300

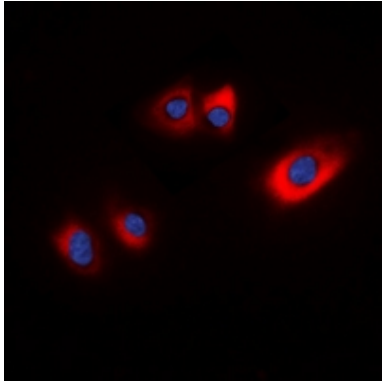
## Images



Western blot analysis of HSP20 (phospho-Ser16) expression in MCF7, HEK293, NIH3T3, H9C2 whole cell lysates.



Immunohistochemical analysis of HSP20 (phospho-Ser16) staining in human breast cancer formalin fixed paraffin embedded tissue section. The section was then incubated with the antibody at room temperature and detected using an HRP conjugated compact polymer system. DAB was used as the chromogen. The section was then counterstained with haematoxylin and mounted with DPX.



Immunofluorescent analysis of HSP20 (phospho-Ser16) staining in HEK293T cells. Formalin-fixed cells were permeabilized with 0.1% Triton X-100 in TBS for 5-10 minutes and blocked with 3% BSA-PBS for 30 minutes at room temperature. Cells were probed with the primary antibody in 3% BSA-PBS and incubated overnight at 4 C in a humidified chamber. Cells were washed with PBST and incubated with a DyLight 594-conjugated secondary antibody (red) in PBS at room temperature in the dark. DAPI was used to stain the cell nuclei (blue).

---

Note: This product is for in vitro research use only