

## EEF1A (acetyl-Lys146) Antibody

Catalog No: #HW212

Orders: order@signalwayantibody.com

Support: tech@signalwayantibody.com

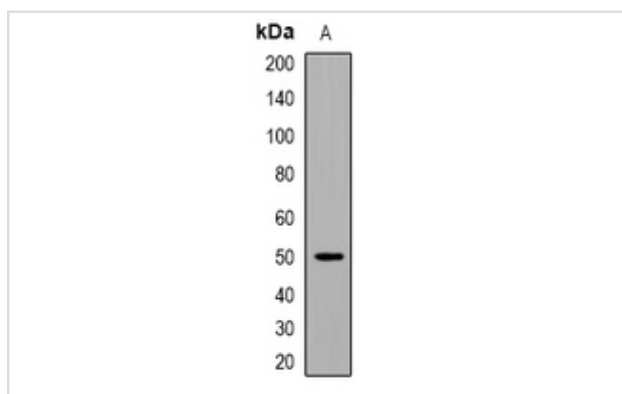
## Description

Product Name	EEF1A (acetyl-Lys146) Antibody
Host Species	Rabbit
Clonality	Polyclonal
Purification	The antibody was purified by immunogen affinity chromatography.
Applications	WB
Species Reactivity	Hu,Ms,Rt
Specificity	Recognizes endogenous levels of EEF1A (AcLys146) protein.
Immunogen Description	KLH-conjugated synthetic peptide encompassing a sequence within the center region of human EEF1A.
Target Name	EEF1A1; EEF1A2; EEF1A1P5
Other Names	EEF1A1; EEF1A; EF1A; LENG7; Elongation factor 1-alpha 1; EF-1-alpha-1; Elongation factor Tu; EF-Tu; Eukaryotic elongation factor 1 A-1; eEF1A-1; Leukocyte receptor cluster member 7; EEF1A2; EEF1AL; STN; Elongation factor 1-alpha 2; EF-1-alpha-2; Eukaryotic elongation factor 1 A-2; eEF1A-2; Statin-S1; EEF1A1P5; EEF1AL3; Putative elongation factor 1-alpha-like 3; EF-1-alpha-like 3; Eukaryotic elongation factor 1 A-like 3; eEF1A-like 3; Eukaryotic translation elongation factor 1 alpha-1 pseudogene 5
Accession No.	Swiss-Prot#:P68104; Q05639; Q5VTE0NCBI Gene ID:1915; 1917
Uniprot	P68104
GeneID	1915;
Calculated MW	50KD
Concentration	1 mg/ml
Formulation	Rabbit IgG in phosphate buffered saline (without Mg <sup>2+</sup> and Ca <sup>2+</sup> ), pH 7.4, 150mM NaCl, 0.02% sodium azide and 50% glycerol.
Storage	Store at -20°C

## Application Details

Western blotting:1:500 - 1:1000

## Images



Western blot analysis of GPR151 expression in rat lung whole cell lysates.

---

Note: This product is for in vitro research use only