

Beta-tubulin (acetyl-Lys379) Antibody

Catalog No: #HW214

Orders: order@signalwayantibody.comSupport: tech@signalwayantibody.com

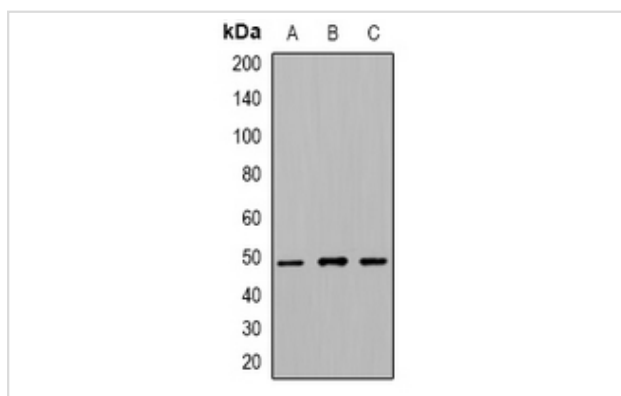
Description

Product Name	Beta-tubulin (acetyl-Lys379) Antibody
Host Species	Rabbit
Clonality	Polyclonal
Purification	The antibody was purified by immunogen affinity chromatography.
Applications	WB
Species Reactivity	Hu,Ms,Rt
Specificity	Recognizes endogenous levels of Beta-tubulin (AcLys379) protein.
Immunogen Description	KLH-conjugated synthetic peptide encompassing a sequence within the center region of human Beta-tubulin.
Target Name	TUBB2A; TUBB2B; TUBB3; TUBB4A; TUBB4B; TUBB; TUBB6
Other Names	TUBB2A; TUBB2; Tubulin beta-2A chain; TUBB2B; Tubulin beta-2B chain; TUBB3; TUBB4; Tubulin beta-3 chain; Tubulin beta-4 chain; Tubulin beta-III; TUBB4A; TUBB4; TUBB5; Tubulin beta-4A chain; Tubulin 5 beta; Tubulin beta-4 chain; TUBB4B; TUBB2C; Tubulin beta-4B chain; Tubulin beta-2 chain; Tubulin beta-2C chain; TUBB; TUBB5; OK/SW-cl.56; Tubulin beta chain; Tubulin beta-5 chain; TUBB6; Tubulin beta-6 chain
Accession No.	Swiss-Prot#:Q13885; Q9BVA1; Q13509; P04350; P68371; P07437; Q9BUF5; NCBI Gene ID:7280; 347733; 10381; 10382; 10383; 203068; 84617
Uniprot	Q13885
GeneID	7280;
Calculated MW	49KD
Concentration	1 mg/ml
Formulation	Rabbit IgG in phosphate buffered saline (without Mg ²⁺ and Ca ²⁺), pH 7.4, 150mM NaCl, 0.02% sodium azide and 50% glycerol.
Storage	Store at -20°C

Application Details

Western blotting:1:500 - 1:1000

Images



Western blot analysis of GPR169 expression in PC12, A549, HeLa whole cell lysates.

Note: This product is for in vitro research use only