

FOXE3 Antibody

Catalog No: #47822

Orders: order@signalwayantibody.comSupport: tech@signalwayantibody.com

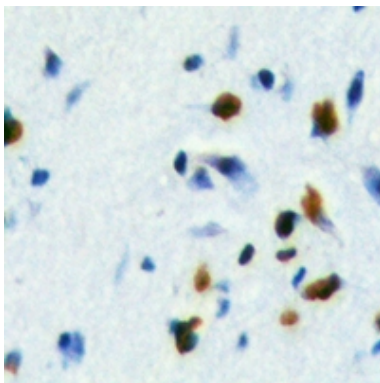
Description

Product Name	FOXE3 Antibody
Host Species	Rabbit
Clonality	Polyclonal
Purification	The antibody was purified by immunogen affinity chromatography.
Applications	WB, IHC
Species Reactivity	Hu,Ms,Rt
Specificity	Recognizes endogenous levels of FOXE3 protein.
Immunogen Description	KLH-conjugated synthetic peptide encompassing a sequence within the center region of human FOXE3.
Target Name	FOXE3
Other Names	FKHL12; FREAC8; Forkhead box protein E3; Forkhead-related protein FKHL12; Forkhead-related transcription factor 8; FREAC-8
Accession No.	Swiss-Prot#:Q13461NCBI Gene ID:2301
Uniprot	Q13461
GeneID	2301;
Calculated MW	33KD
Concentration	1 mg/ml
Formulation	Liquid in 0.42% Potassium phosphate, 0.87% Sodium chloride, pH 7.3, 30% glycerol, and 0.01% sodium azide.
Storage	Store at -20°C

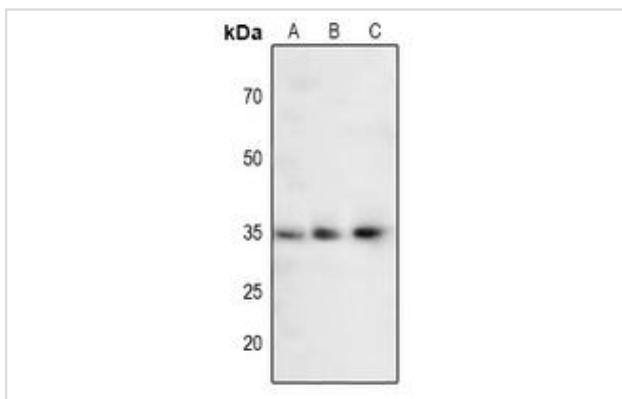
Application Details

WB (1/500 - 1/1000), IHC (1/100 - 1/200)

Images



Immunohistochemical analysis of FOXE3 staining in human brain formalin fixed paraffin embedded tissue section. The section was then incubated with the antibody at room temperature and detected using an HRP conjugated compact polymer system. DAB was used as the chromogen. The section was then counterstained with haematoxylin and mounted with DPX.



Western blot analysis of FOXE3 expression in HeLa (A), mouse muscle (B), rat muscle (C) whole cell lysates

Note: This product is for in vitro research use only