

## Rb Polyclonal Antibody

Catalog No: #41389

Package Size: #41389-1 50ul #41389-2 100ul

Orders: [order@signalwayantibody.com](mailto:order@signalwayantibody.com)Support: [tech@signalwayantibody.com](mailto:tech@signalwayantibody.com)

## Description

Product Name	Rb Polyclonal Antibody
Host Species	Rabbit
Clonality	Polyclonal
Purification	The antibody was affinity-purified from rabbit antiserum by affinity-chromatography using epitope-specific immunogen.
Applications	WB IHC IF ELISA
Species Reactivity	Hu Ms Rt
Specificity	Rb Polyclonal Antibody detects endogenous levels of Rb protein.
Immunogen Type	peptide
Immunogen Description	Synthesized peptide derived from human Rb around the non-phosphorylation site of S811.
Target Name	Rb
Other Names	RB1; Retinoblastoma-associated protein; p105-Rb; pRb; Rb; pp110
Accession No.	Swiss-Prot: P06400NCBI Gene ID: 5925
Uniprot	P06400
GeneID	5925;
SDS-PAGE MW	89kd
Concentration	1mg/ml
Formulation	Liquid in PBS containing 50% glycerol, 0.5% BSA and 0.02% sodium azide.
Storage	Store at -20°C/1 year

## Application Details

Western Blot: 1/500 - 1/2000.

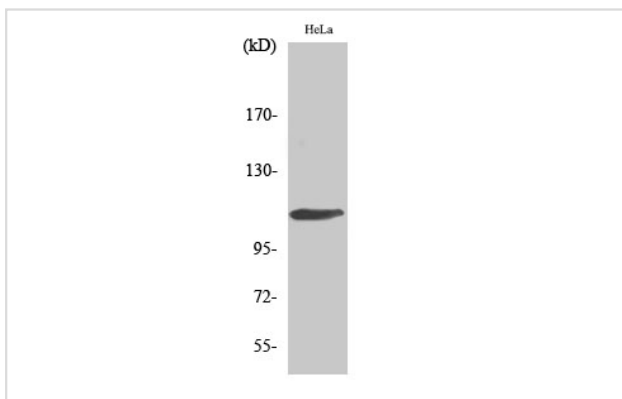
Immunohistochemistry: 1/100 - 1/300.

Immunofluorescence: 1/200 - 1/1000.

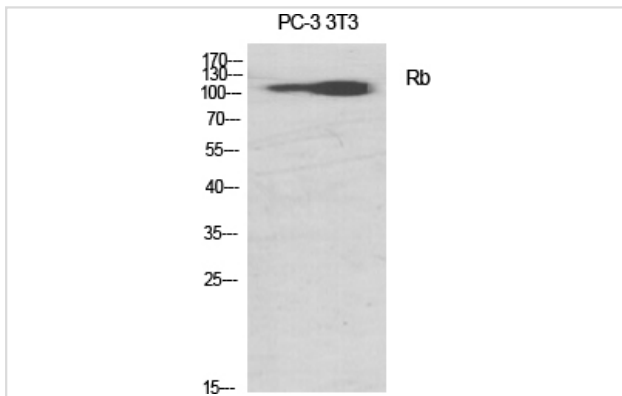
ELISA: 1/5000.

Not yet tested in other applications.

## Images



Western Blot analysis of HeLa cells using Rb Polyclonal Antibody



Western Blot analysis of Jurkat cells using Rb Polyclonal Antibody

---

Note: This product is for in vitro research use only