

GPR37L1 Antibody

Catalog No: #47827

Orders: order@signalwayantibody.comSupport: tech@signalwayantibody.com

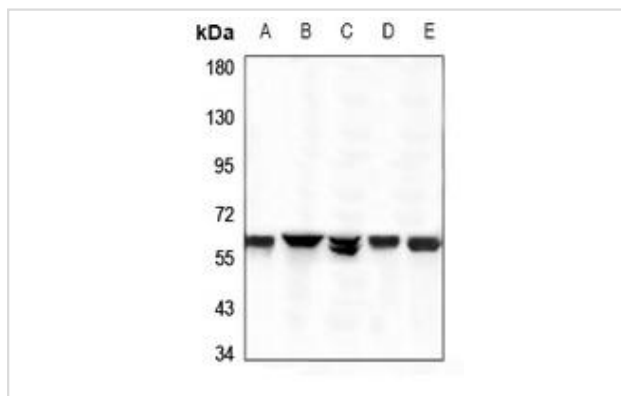
Description

Product Name	GPR37L1 Antibody
Host Species	Rabbit
Clonality	Polyclonal
Purification	The antibody was purified by immunogen affinity chromatography.
Applications	WB, IF/ICC
Species Reactivity	Hu
Specificity	Recognizes endogenous levels of GPR37L1 protein.
Immunogen Description	KLH-conjugated synthetic peptide encompassing a sequence within the N-term region of human GPR37L1.
Target Name	GPR37L1
Other Names	ETBRLP2; Prosaposin receptor GPR37L1; Endothelin B receptor-like protein 2; ETBR-LP-2; G-protein coupled receptor 37-like 1
Accession No.	Swiss-Prot#:O60883NCBI Gene ID:9283
Uniprot	O60883
GeneID	9283;
Calculated MW	53KD
Concentration	1 mg/ml
Formulation	Liquid in 0.42% Potassium phosphate, 0.87% Sodium chloride, pH 7.3, 30% glycerol, and 0.01% sodium azide.
Storage	Store at -20°C

Application Details

WB (1/500 - 1/1000), IF/ICC (1/50 - 1/200)

Images



Western blot analysis of GPR37L1 expression in SKOV3 (A), HEK293T (B), A549 (C), LO2 (D), EC9706 (E) whole cell lysates



Immunofluorescent analysis of GPR37L1 staining in LOVO cells. Formalin-fixed cells were permeabilized with 0.1% Triton X-100 in TBS for 5-10 minutes and blocked with 3% BSA-PBS for 30 minutes at room temperature. Cells were probed with the primary antibody in 3% BSA-PBS and incubated overnight at 4 °C in a humidified chamber. Cells were washed with PBST and incubated with a AF594-conjugated secondary antibody (red) in PBS at room temperature in the dark.

Note: This product is for in vitro research use only