

KLHL3 Antibody

Catalog No: #47830

Orders: order@signalwayantibody.comSupport: tech@signalwayantibody.com

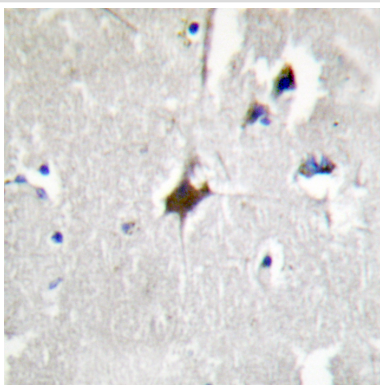
Description

Product Name	KLHL3 Antibody
Host Species	Rabbit
Clonality	Polyclonal
Purification	The antibody was purified by immunogen affinity chromatography.
Applications	WB, IHC, IF/ICC
Species Reactivity	Hu
Specificity	Recognizes endogenous levels of KLHL3 protein.
Immunogen Description	KLH-conjugated synthetic peptide encompassing a sequence within the N-term region of human KLHL3.
Target Name	KLHL3
Other Names	KIAA1129; Kelch-like protein 3
Accession No.	Swiss-Prot#:Q9UH77NCBI Gene ID:26249
Uniprot	Q9UH77
GeneID	26249;
Calculated MW	65KD
Concentration	1 mg/ml
Formulation	Liquid in 0.42% Potassium phosphate, 0.87% Sodium chloride, pH 7.3, 30% glycerol, and 0.01% sodium azide.
Storage	Store at -20°C

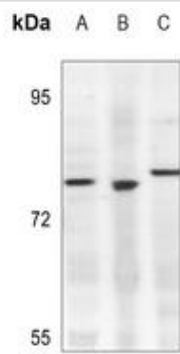
Application Details

WB (1/500 - 1/1000), IHC (1/50 - 1/200), IF/ICC (1/50 - 1/200)

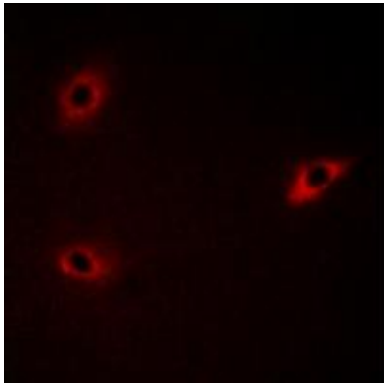
Images



Immunohistochemical analysis of KLHL3 staining in human brain formalin fixed paraffin embedded tissue section. The section was then incubated with the antibody at room temperature and detected using an HRP conjugated compact polymer system. DAB was used as the chromogen. The section was then counterstained with haematoxylin and mounted with DPX.



Western blot analysis of KLHL3 expression in U87MG (A), HEK293T (B), HeLa (C) whole cell lysates



Immunofluorescent analysis of KLHL3 staining in A549 cells. Formalin-fixed cells were permeabilized with 0.1% Triton X-100 in TBS for 5-10 minutes and blocked with 3% BSA-PBS for 30 minutes at room temperature. Cells were probed with the primary antibody in 3% BSA-PBS and incubated overnight at 4 °C in a humidified chamber. Cells were washed with PBST and incubated with a AF594-conjugated secondary antibody (red) in PBS at room temperature in the dark.

Note: This product is for in vitro research use only