

## MAGEA5 Antibody

Catalog No: #47831

Orders: [order@signalwayantibody.com](mailto:order@signalwayantibody.com)Support: [tech@signalwayantibody.com](mailto:tech@signalwayantibody.com)

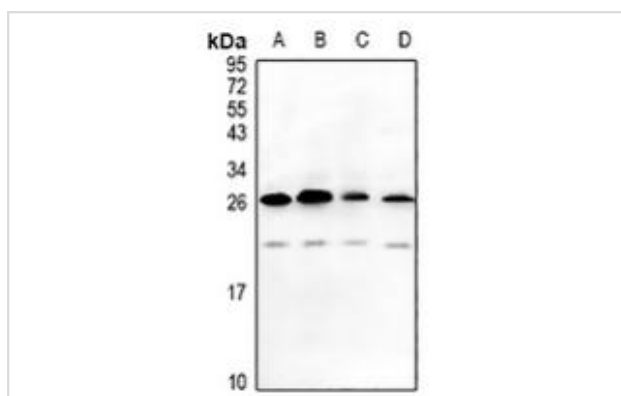
## Description

|                       |   |
|-----------------------|---|
| Product Name          | MAGEA5 Antibody   |
| Host Species          | Rabbit  |
| Clonality             | Polyclonal  |
| Purification          | The antibody was purified by immunogen affinity chromatography.   |
| Applications          | WB  |
| Species Reactivity    | Hu,Ms,Rt  |
| Specificity           | Recognizes endogenous levels of MAGEA5 protein.   |
| Immunogen Description | KLH-conjugated synthetic peptide encompassing a sequence within the center region of human MAGEA5.        |
| Target Name           | MAGEA5  |
| Other Names           | MAGE5; Melanoma-associated antigen 5; Cancer/testis antigen 1.5; CT1.5; MAGE-5 antigen                    |
| Accession No.         | Swiss-Prot#:P43359NCBI Gene ID:100533997; 4104  |
| Uniprot               | P43359  |
| GeneID                | 100533997;4104;   |
| Calculated MW         | 36KD  |
| Concentration         | 1 mg/ml   |
| Formulation           | Liquid in 0.42% Potassium phosphate, 0.87% Sodium chloride, pH 7.3, 30% glycerol, and 0.01% sodium azide. |
| Storage               | Store at -20°C  |

## Application Details

WB (1/500 - 1/1000)

## Images



Western blot analysis of MAGEA5 expression in mouse testis (A), rat testis (B), HeLa (C), A375 (D) whole cell lysates.

Note: This product is for in vitro research use only