

MRPS7 Antibody

Catalog No: #47837

Orders: order@signalwayantibody.comSupport: tech@signalwayantibody.com

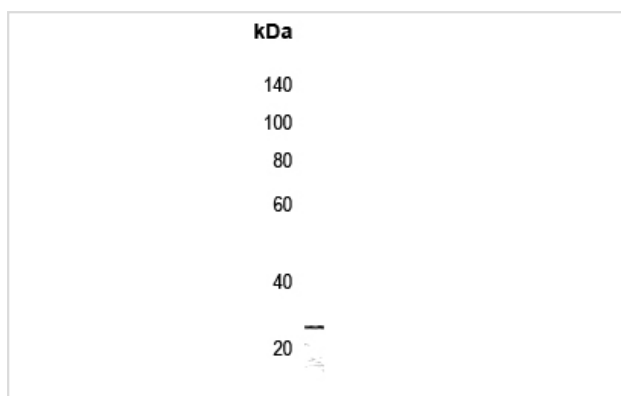
Description

Product Name	MRPS7 Antibody
Host Species	Rabbit
Clonality	Polyclonal
Purification	The antibody was purified by immunogen affinity chromatography.
Applications	WB IHC
Species Reactivity	Hu,Ms,Rt
Specificity	Recognizes endogenous levels of MRPS7 protein.
Immunogen Description	KLH-conjugated synthetic peptide encompassing a sequence within the center region of human MRPS7.
Target Name	MRPS7
Other Names	28S ribosomal protein S7 mitochondrial; MRP-S7; S7mt; bMRP-27a; bMRP27a
Accession No.	Swiss-Prot#:Q9Y2R9NCBI Gene ID:51081
Uniprot	Q9Y2R9
GeneID	51081;
Calculated MW	24KD
Concentration	1 mg/ml
Formulation	Rabbit IgG in phosphate buffered saline (without Mg ²⁺ and Ca ²⁺), pH 7.4, 150mM NaCl, 0.02% sodium azide and 50% glycerol.
Storage	Store at -20°C

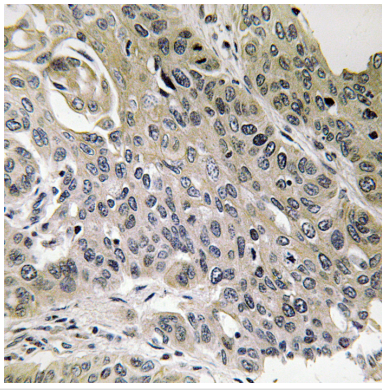
Application Details

Western blotting:1:500 - 1:1000Immunohistochemistry:1:50 - 1:100

Images



Western blot analysis of MEGF8 expression in COLO205 whole cell lysates.



Immunohistochemical analysis of MRPS7 staining in human lung carcinoma formalin fixed paraffin embedded tissue section. The section was then incubated with the antibody at room temperature and detected using an HRP conjugated compact polymer system. DAB was used as the chromogen. The section was then counterstained with haematoxylin and mounted with DPX.

Note: This product is for in vitro research use only