

NOL10 Antibody

Catalog No: #47840

Orders: order@signalwayantibody.comSupport: tech@signalwayantibody.com

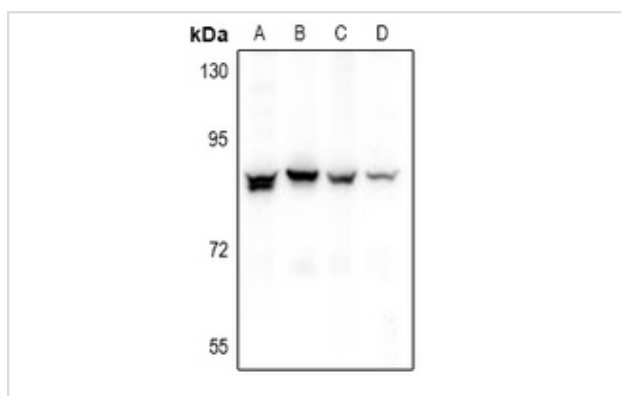
Description

Product Name	NOL10 Antibody
Host Species	Rabbit
Clonality	Polyclonal
Purification	The antibody was purified by immunogen affinity chromatography.
Applications	WB, IHC
Species Reactivity	Hu,Ms,Rt
Specificity	Recognizes endogenous levels of NOL10 protein.
Immunogen Description	KLH-conjugated synthetic peptide encompassing a sequence within the C-term region of human NOL10.
Target Name	NOL10
Other Names	Nucleolar protein 10
Accession No.	Swiss-Prot#:Q9BSC4NCBI Gene ID:79954
Uniprot	Q9BSC4
GeneID	79954;
Calculated MW	80KD
Concentration	1 mg/ml
Formulation	Liquid in 0.42% Potassium phosphate, 0.87% Sodium chloride, pH 7.3, 30% glycerol, and 0.01% sodium azide.
Storage	Store at -20°C

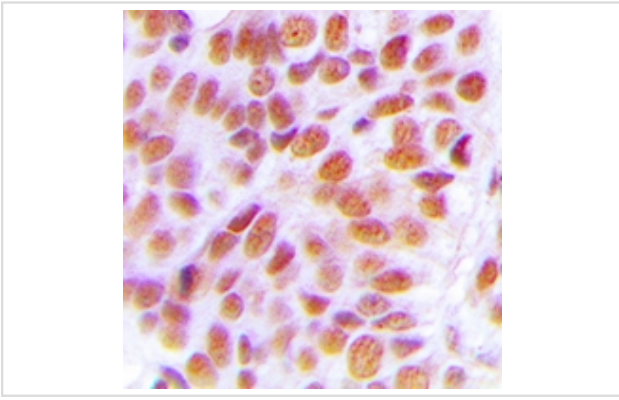
Application Details

WB (1/500 - 1/1000), IHC (1/50 - 1/100)

Images



Western blot analysis of NOL10 expression in A549 (A), HepG2 (B), PC12 (C), AML12 (D) whole cell lysates



Immunohistochemical analysis of NOL10 staining in human breast cancer formalin fixed paraffin embedded tissue section. The section was then incubated with the antibody at room temperature and detected using an HRP conjugated compact polymer system. DAB was used as the chromogen. The section was then counterstained with haematoxylin and mounted with DPX.

Note: This product is for in vitro research use only