

NT5C3 Antibody

Catalog No: #47841

Orders: order@signalwayantibody.comSupport: tech@signalwayantibody.com

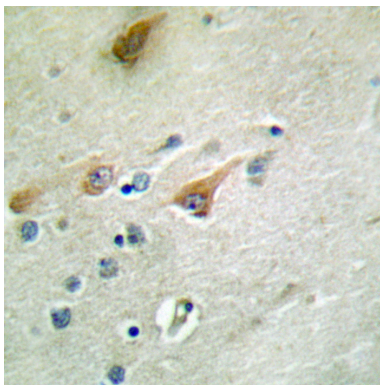
Description

| | |
|-----------------------|--------------------------------------------------------------------------------------------------------------------------------------------------------------------------------------------------------------------|
| Product Name | NT5C3 Antibody |
| Host Species | Rabbit |
| Clonality | Polyclonal |
| Purification | The antibody was purified by immunogen affinity chromatography. |
| Applications | WB, IHC, IF/ICC |
| Species Reactivity | Hu |
| Specificity | Recognizes endogenous levels of NT5C3 protein. |
| Immunogen Description | KLH-conjugated synthetic peptide encompassing a sequence within the N-term region of human NT5C3. |
| Target Name | NT5C3 |
| Other Names | NT5C3; P5N1; UMPH1; Cytosolic 5'-nucleotidase 3A; Cytosolic 5'-nucleotidase 3; Cytosolic 5'-nucleotidase III; cN-III; Pyrimidine 5'-nucleotidase 1; P5'N-1; P5N-1; PN-I; Uridine 5'-monophosphate hydrolase 1; p36 |
| Accession No. | Swiss-Prot#:Q9H0P0NCBI Gene ID:51251 |
| Uniprot | Q9H0P0 |
| GeneID | 51251; |
| Calculated MW | 38KD |
| Concentration | 1 mg/ml |
| Formulation | Liquid in 0.42% Potassium phosphate, 0.87% Sodium chloride, pH 7.3, 30% glycerol, and 0.01% sodium azide. |
| Storage | Store at -20°C |

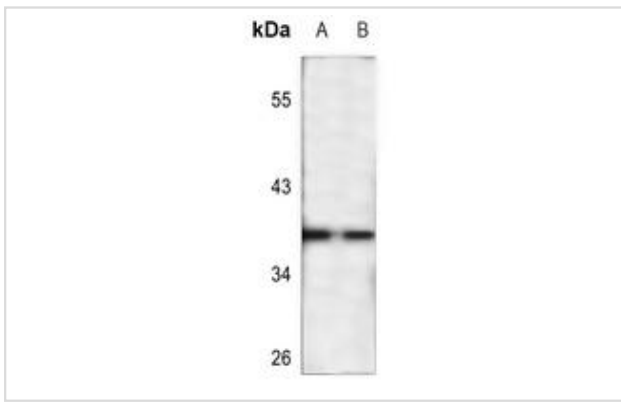
Application Details

WB (1/500 - 1/1000), IHC (1/50 - 1/200), IF/ICC (1/50 - 1/200)

Images



Immunohistochemical analysis of NT5C3 staining in human brain formalin fixed paraffin embedded tissue section. The section was then incubated with the antibody at room temperature and detected using an HRP conjugated compact polymer system. DAB was used as the chromogen. The section was then counterstained with haematoxylin and mounted with DPX.



Western blot analysis of NT5C3 expression in K562 (A), HeLa (B) whole cell lysates



Immunofluorescent analysis of NT5C3 staining in HeLa cells. Formalin-fixed cells were permeabilized with 0.1% Triton X-100 in TBS for 5-10 minutes and blocked with 3% BSA-PBS for 30 minutes at room temperature. Cells were probed with the primary antibody in 3% BSA-PBS and incubated overnight at 4 °C in a humidified chamber. Cells were washed with PBST and incubated with a AF594-conjugated secondary antibody (red) in PBS at room temperature in the dark.

Note: This product is for in vitro research use only