

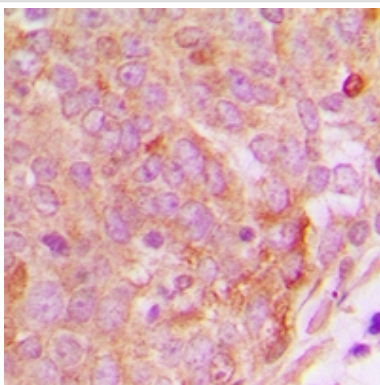
Description

| | |
|-----------------------|---|
| Product Name | PP15 Antibody |
| Host Species | Rabbit |
| Clonality | Polyclonal |
| Purification | The antibody was purified by immunogen affinity chromatography. |
| Applications | WB, IHC |
| Species Reactivity | Hu,Ms,Rt |
| Specificity | Recognizes endogenous levels of PP15 protein. |
| Immunogen Description | KLH-conjugated synthetic peptide encompassing a sequence within the center region of human PP15. |
| Target Name | NUTF2 |
| Other Names | NTF2; Nuclear transport factor 2; NTF-2; Placental protein 15; PP15 |
| Accession No. | Swiss-Prot#:P61970NCBI Gene ID:10204 |
| Uniprot | P61970 |
| GeneID | 10204; |
| Calculated MW | 14,28,42KD |
| Concentration | 1 mg/ml |
| Formulation | Liquid in 0.42% Potassium phosphate, 0.87% Sodium chloride, pH 7.3, 30% glycerol, and 0.01% sodium azide. |
| Storage | Store at -20°C |

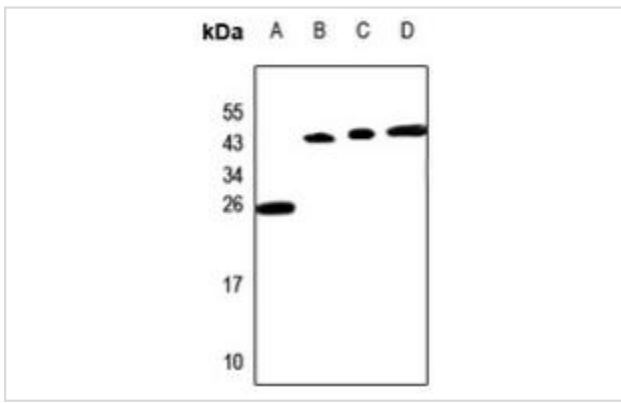
Application Details

WB (1/500 - 1/1000), IHC (1/100 - 1/200)

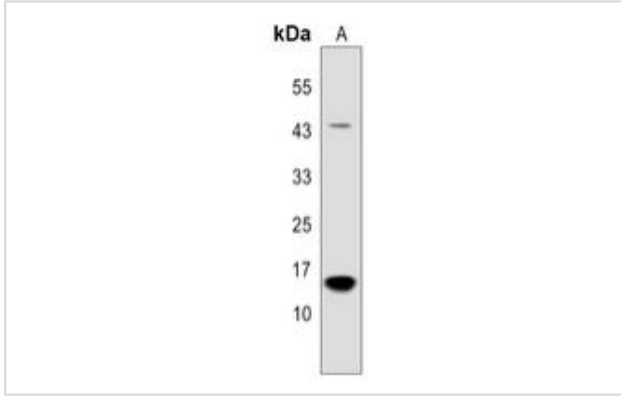
Images



Immunohistochemical analysis of PP15 staining in human breast cancer formalin fixed paraffin embedded tissue section. The section was then incubated with the antibody at room temperature and detected using an HRP conjugated compact polymer system. DAB was used as the chromogen. The section was then counterstained with haematoxylin and mounted with DPX.



Western blot analysis of PP15 expression in HepG2 (A), MCF7 (B), CT26 (C), C6 (D) whole cell lysates.



Western blot analysis of PP15 expression in MOLT4 (A) whole cell lysates.

Note: This product is for in vitro research use only