

## RECS1 Polyclonal Antibody

Catalog No: #41391

Package Size: #41391-1 50ul #41391-2 100ul

Orders: [order@signalwayantibody.com](mailto:order@signalwayantibody.com)Support: [tech@signalwayantibody.com](mailto:tech@signalwayantibody.com)

## Description

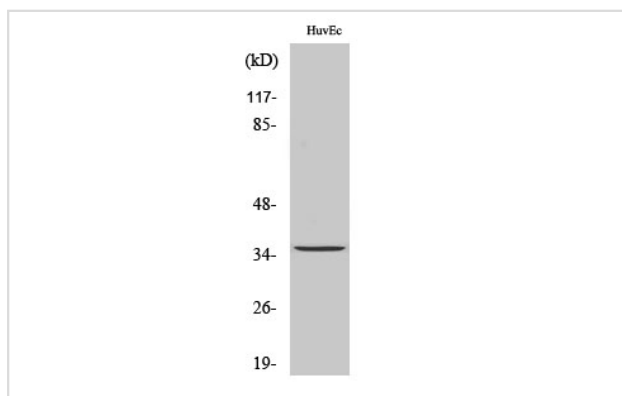
|                       |   |
|-----------------------|---|
| Product Name          | RECS1 Polyclonal Antibody   |
| Host Species          | Rabbit  |
| Clonality             | Polyclonal  |
| Purification          | The antibody was affinity-purified from rabbit antiserum by affinity-chromatography using epitope-specific immunogen.                     |
| Applications          | WB IHC  |
| Species Reactivity    | Hu Ms Rt  |
| Specificity           | RECS1 Polyclonal Antibody detects endogenous levels of RECS1 protein.   |
| Immunogen Type        | peptide   |
| Immunogen Description | Synthesized peptide derived from the C-terminal region of human RECS1.  |
| Target Name           | RECS1   |
| Other Names           | TMBIM1; LFG3; RECS1; PP1201; PSEC0158; Protein lifeguard 3; Protein RECS1 homolog; Transmembrane BAX inhibitor motif-containing protein 1 |
| Accession No.         | Swiss-Prot: Q969X1NCBI Gene ID: 64114   |
| Uniprot               | Q969X1  |
| GeneID                | 64114;  |
| SDS-PAGE MW           | 35kd  |
| Concentration         | 1mg/ml  |
| Formulation           | Liquid in PBS containing 50% glycerol, 0.5% BSA and 0.02% sodium azide.   |
| Storage               | Store at -20°C/1 year   |

## Application Details

Western Blot: 1/500 - 1/2000.

Immunohistochemistry: 1/100 - 1/300.

## Images



Western Blot analysis of HuvEc cells using RECS1 Polyclonal Antibody

---

Note: This product is for in vitro research use only