

## POTEG Antibody

Catalog No: #47847

Orders: [order@signalwayantibody.com](mailto:order@signalwayantibody.com)Support: [tech@signalwayantibody.com](mailto:tech@signalwayantibody.com)

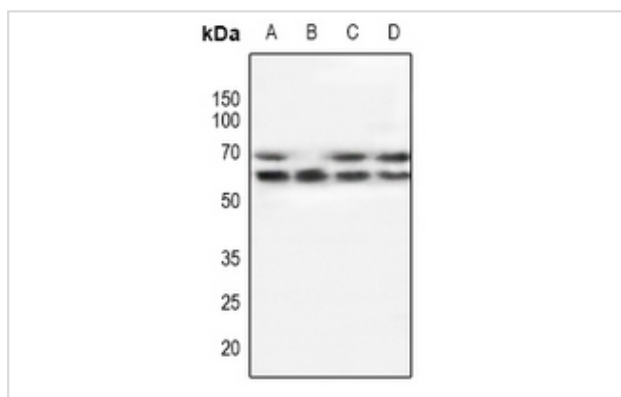
## Description

Product Name	POTEG Antibody
Host Species	Rabbit
Clonality	Polyclonal
Purification	The antibody was purified by immunogen affinity chromatography.
Applications	WB, IHC
Species Reactivity	Hu,Ms,Rt
Specificity	Recognizes endogenous levels of POTEG protein.
Immunogen Description	KLH-conjugated synthetic peptide encompassing a sequence within the C-term region of human POTEG.
Target Name	POTEG
Other Names	POTEG; A26C2; POTE14; POTE ankyrin domain family member G; ANKRD26-like family C member 2; Prostate ovary testis-expressed protein on chromosome 14; POTE-14; POTEH; A26C3; ACTBL1; POTE22; POTE ankyrin domain family member H; ANKRD26-like family C member 3; Prostate ovary testis-expressed protein on chromosome 22; POTE-22; POTEM; Putative POTE ankyrin domain family member M
Accession No.	Swiss-Prot#:Q6S5H5; Q6S545; A6NI47NCBI Gene ID:404785; 23784
Uniprot	Q6S5H5
GeneID	404785;
Calculated MW	57,54KD
Concentration	1 mg/ml
Formulation	Liquid in 0.42% Potassium phosphate, 0.87% Sodium chloride, pH 7.3, 30% glycerol, and 0.01% sodium azide.
Storage	Store at -20°C

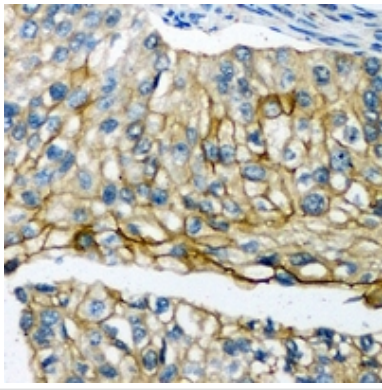
## Application Details

WB (1/500 - 1/1000), IHC (1/50 - 1/100)

## Images



Western blot analysis of POTEG expression in A549 (A), mouse testis (B), rat testis (C), mouse brain (D) whole cell lysates.



Immunohistochemical analysis of POTEG staining in human prostate cancer formalin fixed paraffin embedded tissue section. The section was then incubated with the antibody at room temperature and detected using an HRP conjugated compact polymer system. DAB was used as the chromogen. The section was then counterstained with haematoxylin and mounted with DPX.

---

Note: This product is for in vitro research use only