

RAC1/2/3 Antibody

Catalog No: #47849

Orders: order@signalwayantibody.comSupport: tech@signalwayantibody.com

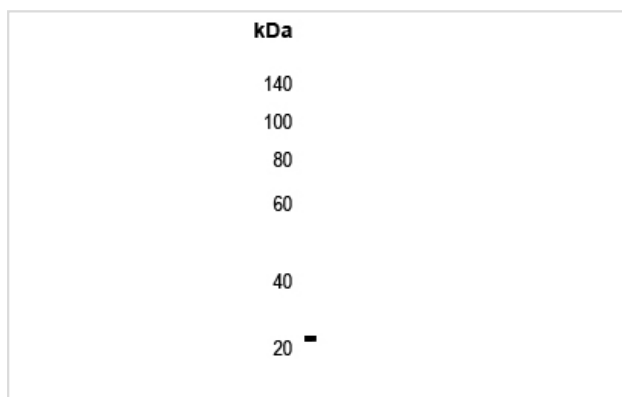
Description

Product Name	RAC1/2/3 Antibody
Host Species	Rabbit
Clonality	Polyclonal
Purification	The antibody was purified by immunogen affinity chromatography.
Applications	WB IHC
Species Reactivity	Hu,Ms,Rt
Specificity	Recognizes endogenous levels of RAC1/2/3 protein.
Immunogen Description	KLH-conjugated synthetic peptide encompassing a sequence within the center region of human RAC3.
Target Name	RAC3
Other Names	RAC1; TC25; MIG5; Ras-related C3 botulinum toxin substrate 1; Cell migration-inducing gene 5 protein; Ras-like protein TC25; p21-Rac1; RAC2; Ras-related C3 botulinum toxin substrate 2; GX; Small G protein; p21-Rac2; RAC3; Ras-related C3 botulinum toxin substrate 3; p21-Rac3; CDC42; Cell division control protein 42 homolog; G25K GTP-binding protein
Accession No.	Swiss-Prot#:P63000; P15153; P60763; P60953NCBI Gene ID:5879; 5880; 5881; 998
Uniprot	P63000
GeneID	5879;
Calculated MW	21KD
Concentration	1 mg/ml
Formulation	Rabbit IgG in phosphate buffered saline (without Mg ²⁺ and Ca ²⁺), pH 7.4, 150mM NaCl, 0.02% sodium azide and 50% glycerol.
Storage	Store at -20°C

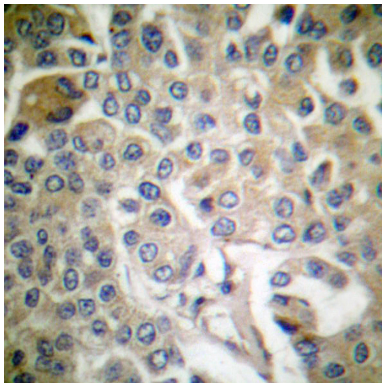
Application Details

Western blotting:1:500 - 1:1000Immunohistochemistry:1:50 - 1:100

Images



Western blot analysis of PLA1A expression in HEK293T, NIH3T3 whole cell lysates.



Immunohistochemical analysis of RAC1/2/3 staining in human breast carcinoma formalin fixed paraffin embedded tissue section. The section was then incubated with the antibody at room temperature and detected using an HRP conjugated compact polymer system. DAB was used as the chromogen. The section was then counterstained with haematoxylin and mounted with DPX.

Note: This product is for in vitro research use only