

RPS27L Antibody

Catalog No: #47851

Orders: order@signalwayantibody.comSupport: tech@signalwayantibody.com

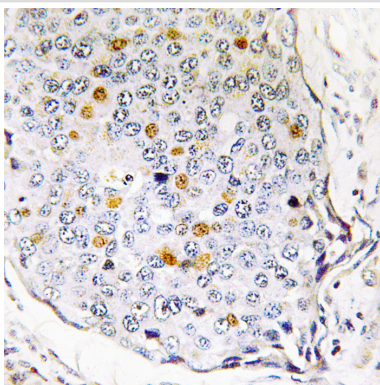
Description

| | |
|-----------------------|---|
| Product Name | RPS27L Antibody |
| Host Species | Rabbit |
| Clonality | Polyclonal |
| Purification | The antibody was purified by immunogen affinity chromatography. |
| Applications | WB, IHC |
| Species Reactivity | Hu,Ms,Rt |
| Specificity | Recognizes endogenous levels of RPS27L protein. |
| Immunogen Description | KLH-conjugated synthetic peptide encompassing a sequence within the N-term region of human RPS27L. |
| Target Name | RPS27L |
| Other Names | 40S ribosomal protein S27-like |
| Accession No. | Swiss-Prot#:Q71UM5NCBI Gene ID:51065 |
| Uniprot | Q71UM5 |
| GeneID | 51065; |
| Calculated MW | 15KD |
| Concentration | 1 mg/ml |
| Formulation | Liquid in 0.42% Potassium phosphate, 0.87% Sodium chloride, pH 7.3, 30% glycerol, and 0.01% sodium azide. |
| Storage | Store at -20°C |

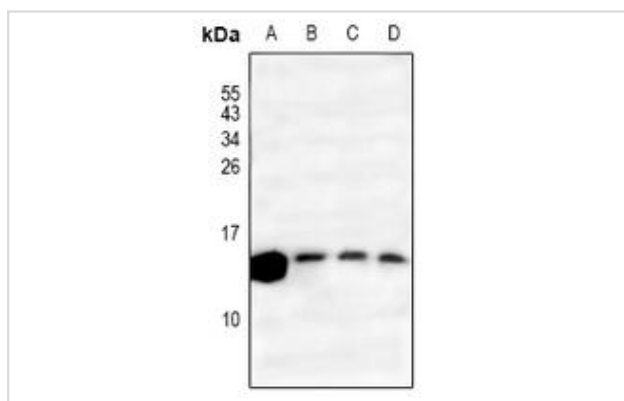
Application Details

WB (1/500 - 1/1000), IHC (1/50 - 1/200)

Images



Immunohistochemical analysis of RPS27L staining in human breast carcinoma formalin fixed paraffin embedded tissue section. The section was then incubated with the antibody at room temperature and detected using an HRP conjugated compact polymer system. DAB was used as the chromogen. The section was then counterstained with haematoxylin and mounted with DPX.



Western blot analysis of RPS27L expression in mouse kidney (A), rat kidney (B), A549 (C), H1792 (D) whole cell lysates.

Note: This product is for in vitro research use only