

## REP-2 Polyclonal Antibody

Catalog No: #41393

Package Size: #41393-1 50ul #41393-2 100ul

Orders: [order@signalwayantibody.com](mailto:order@signalwayantibody.com)Support: [tech@signalwayantibody.com](mailto:tech@signalwayantibody.com)

## Description

Product Name	REP-2 Polyclonal Antibody
Host Species	Rabbit
Clonality	Polyclonal
Purification	The antibody was affinity-purified from rabbit antiserum by affinity-chromatography using epitope-specific immunogen.
Applications	WB IHC ELISA
Species Reactivity	Hu
Specificity	REP-2 Polyclonal Antibody detects endogenous levels of REP-2 protein.
Immunogen Type	peptide
Immunogen Description	Synthesized peptide derived from the Internal region of human REP-2.
Target Name	REP-2
Other Names	CHML; REP2; Rab proteins geranylgeranyltransferase component A 2; Choroideraemia-like protein; Rab escort protein 2; REP-2
Accession No.	Swiss-Prot: P26374NCBI Gene ID: 1122
Uniprot	P26374
GeneID	1122;
SDS-PAGE MW	85kd
Concentration	1mg/ml
Formulation	Liquid in PBS containing 50% glycerol, 0.5% BSA and 0.02% sodium azide.
Storage	Store at -20°C/1 year

## Application Details

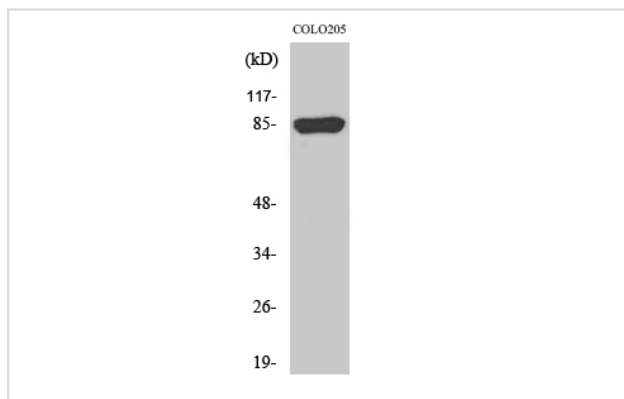
Western Blot: 1/500 - 1/2000.

Immunohistochemistry: 1/100 - 1/300.

ELISA: 1/5000.

Not yet tested in other applications.

## Images



Western Blot analysis of COLO205 cells using REP-2 Polyclonal Antibody

---

Note: This product is for in vitro research use only