

SCAMP1 Antibody

Catalog No: #47872

Orders: order@signalwayantibody.comSupport: tech@signalwayantibody.com

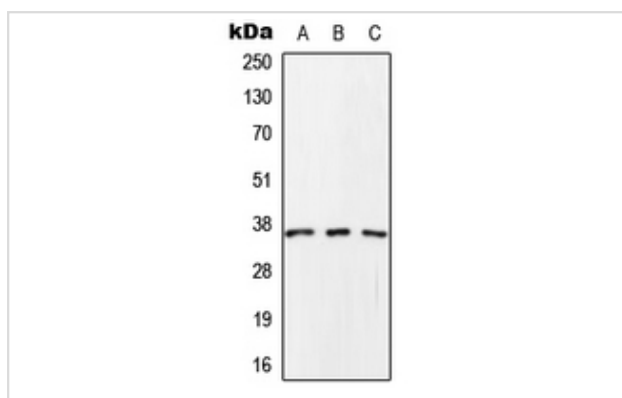
Description

Product Name	SCAMP1 Antibody
Host Species	Rabbit
Clonality	Polyclonal
Purification	The antibody was purified by immunogen affinity chromatography.
Applications	WB
Species Reactivity	Hu,Ms,Rt
Specificity	Recognizes endogenous levels of SCAMP1 protein.
Immunogen Description	KLH-conjugated synthetic peptide encompassing a sequence within the C-term region of human SCAMP1.
Target Name	SCAMP1
Other Names	SCAMP; Secretory carrier-associated membrane protein 1; Secretory carrier membrane protein 1
Accession No.	Swiss-Prot#:O15126NCBI Gene ID:9522
Uniprot	O15126
GeneID	9522;
Calculated MW	37KD
Concentration	1 mg/ml
Formulation	Liquid in 0.42% Potassium phosphate, 0.87% Sodium chloride, pH 7.3, 30% glycerol, and 0.01% sodium azide.
Storage	Store at -20°C

Application Details

WB (1/500 - 1/1000)

Images



Western blot analysis of SCAMP1 expression in HeLa (A), Raw264.7 (B), rat brain (C) whole cell lysates

Note: This product is for in vitro research use only