

SHARP1 Antibody

Catalog No: #47878

Orders: order@signalwayantibody.com

Support: tech@signalwayantibody.com

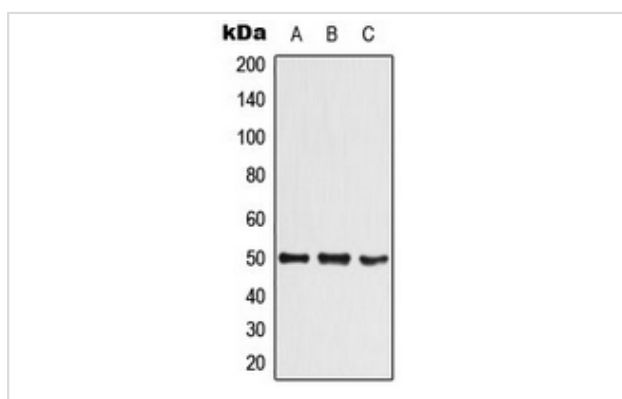
Description

Product Name	SHARP1 Antibody
Host Species	Rabbit
Clonality	Polyclonal
Purification	The antibody was purified by immunogen affinity chromatography.
Applications	WB, IHC
Species Reactivity	Hu,Ms,Rt
Specificity	Recognizes endogenous levels of SHARP1 protein.
Immunogen Description	KLH-conjugated synthetic peptide encompassing a sequence within the N-term region of human SHARP1.
Target Name	BHLHE41
Other Names	BHLHB3; DEC2; SHARP1; Class E basic helix-loop-helix protein 41; bHLHe41; Class B basic helix-loop-helix protein 3; bHLHb3; Differentially expressed in chondrocytes protein 2; hDEC2; Enhancer-of-split and hairy-related protein 1; SHARP-1
Accession No.	Swiss-Prot#:Q9C0J9NCBI Gene ID:79365
Uniprot	Q9C0J9
GeneID	79365;
Calculated MW	50KD
Concentration	1 mg/ml
Formulation	Liquid in 0.42% Potassium phosphate, 0.87% Sodium chloride, pH 7.3, 30% glycerol, and 0.01% sodium azide.
Storage	Store at -20°C

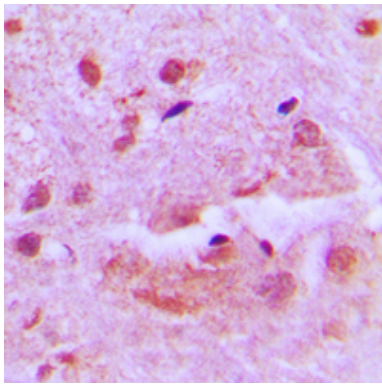
Application Details

WB (1/500 - 1/1000), IHC (1/100 - 1/200)

Images



Western blot analysis of SHARP1 expression in SHSY5Y (A), RAW264.7 (B), PC12 (C) whole cell lysates.



Immunohistochemical analysis of SHARP1 staining in human brain formalin fixed paraffin embedded tissue section. The section was then incubated with the antibody at room temperature and detected using an HRP conjugated compact polymer system. DAB was used as the chromogen. The section was then counterstained with haematoxylin and mounted with DPX.

Note: This product is for in vitro research use only