

## ACTN1/2/3/4 Antibody

Catalog No: #47879

Orders: [order@signalwayantibody.com](mailto:order@signalwayantibody.com)Support: [tech@signalwayantibody.com](mailto:tech@signalwayantibody.com)

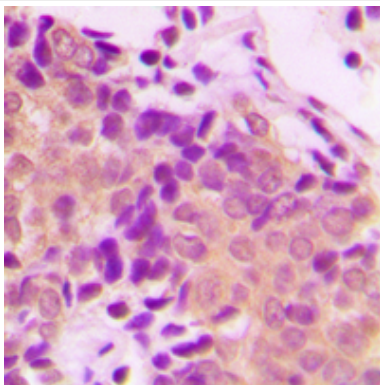
## Description

Product Name	ACTN1/2/3/4 Antibody
Host Species	Rabbit
Clonality	Polyclonal
Purification	The antibody was purified by immunogen affinity chromatography.
Applications	WB, IHC
Species Reactivity	Hu,Ms,Rt
Specificity	Recognizes endogenous levels of ACTN1/2/3/4 protein.
Immunogen Description	KLH-conjugated synthetic peptide encompassing a sequence within the N-term region of human ACTN1/2/3/4.
Target Name	ACTN1; ACTN2; ACTN3; ACTN4
Other Names	ACTN1; Alpha-actinin-1; Alpha-actinin cytoskeletal isoform; F-actin cross-linking protein; Non-muscle alpha-actinin-1; ACTN2; Alpha-actinin-2; Alpha-actinin skeletal muscle isoform 2; F-actin cross-linking protein; ACTN3; Alpha-actinin-3; Alpha-actinin skeletal muscle isoform 3; F-actin cross-linking protein; ACTN4; Alpha-actinin-4; F-actin cross-linking protein; Non-muscle alpha-actinin 4
Accession No.	Swiss-Prot#:P12814; P35609; Q08043; O43707NCBI Gene ID:87; 88; 89; 81
Uniprot	P12814
GeneID	87;
Calculated MW	105KD
Concentration	1 mg/ml
Formulation	Liquid in 0.42% Potassium phosphate, 0.87% Sodium chloride, pH 7.3, 30% glycerol, and 0.01% sodium azide.
Storage	Store at -20°C

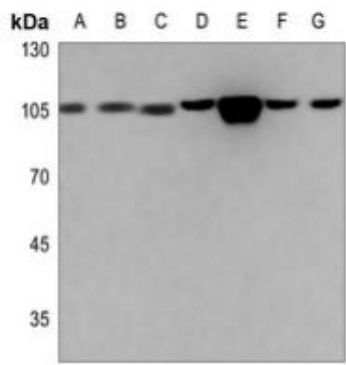
## Application Details

WB (1/500 - 1/1000), IHC (1/50 - 1/100)

## Images



Immunohistochemical analysis of ACTN1/2/3/4 staining in human breast cancer formalin fixed paraffin embedded tissue section. The section was then incubated with the antibody at room temperature and detected using an HRP conjugated compact polymer system. DAB was used as the chromogen. The section was then counterstained with haematoxylin and mounted with DPX.



Western blot analysis of ACTN1/2/3/4 expression in A375 (A), U2OS (B), DLD (C), mouse heart (D), mouse muscle (E), rat heart (F), rat muscle (G) whole cell lysates.

---

Note: This product is for in vitro research use only