

## KLF1/5/7 Antibody

Catalog No: #47880

Orders: order@signalwayantibody.com

Support: tech@signalwayantibody.com

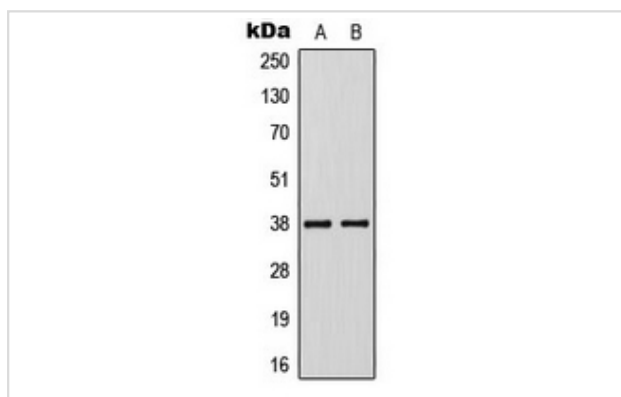
## Description

|                       |  |
|-----------------------|--|
| Product Name          | KLF1/5/7 Antibody  |
| Host Species          | Rabbit   |
| Clonality             | Polyclonal   |
| Purification          | The antibody was purified by immunogen affinity chromatography.  |
| Applications          | WB   |
| Species Reactivity    | Hu,Rt  |
| Specificity           | Recognizes endogenous levels of KLF1/5/7 protein.  |
| Immunogen Description | KLH-conjugated synthetic peptide encompassing a sequence within the C-term region of human KLF1/5/7.   |
| Target Name           | KLF1; KLF5; KLF7   |
| Other Names           | KLF1; EKLF; Krueppel-like factor 1; Erythroid krueppel-like transcription factor; EKLF; KLF5; BTEB2; CKLF; IKLF; Krueppel-like factor 5; Basic transcription element-binding protein 2; BTE-binding protein 2; Colon krueppel-like factor; GC-box-binding protein 2; Intestinal-enriched krueppel-like factor; Transcription factor BTEB2; KLF7; UKLF; Krueppel-like factor 7; Ubiquitous krueppel-like factor |
| Accession No.         | Swiss-Prot#:Q13351; Q13887; O75840NCBI Gene ID:10661; 688; 8609  |
| Uniprot               | Q13351   |
| GeneID                | 10661;   |
| Calculated MW         | 38KD   |
| Concentration         | 1 mg/ml  |
| Formulation           | Liquid in 0.42% Potassium phosphate, 0.87% Sodium chloride, pH 7.3, 30% glycerol, and 0.01% sodium azide.  |
| Storage               | Store at -20°C   |

## Application Details

WB (1/500 - 1/1000)

## Images



Western blot analysis of KLF1/5/7 expression in Jurkat (A), VEC (B) whole cell lysates.

---

Note: This product is for in vitro research use only