

## GPR143 Antibody

Catalog No: #47887

Orders: [order@signalwayantibody.com](mailto:order@signalwayantibody.com)Support: [tech@signalwayantibody.com](mailto:tech@signalwayantibody.com)

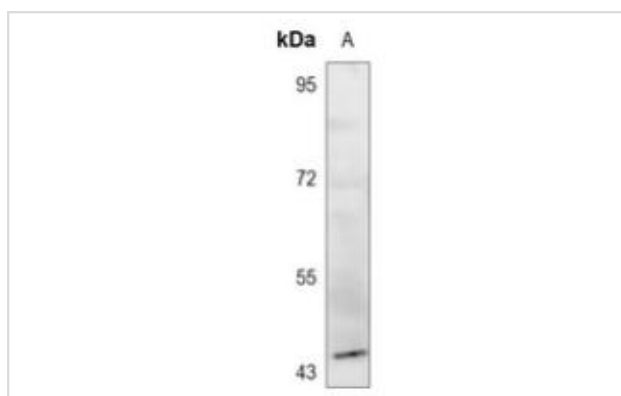
## Description

Product Name	GPR143 Antibody
Host Species	Rabbit
Clonality	Polyclonal
Purification	The antibody was purified by immunogen affinity chromatography.
Applications	WB, IF/ICC
Species Reactivity	Hu,Ms,Rt
Specificity	Recognizes endogenous levels of GPR143 protein.
Immunogen Description	KLH-conjugated synthetic peptide encompassing a sequence within the center region of human GPR143.
Target Name	GPR143
Other Names	OA1; G-protein coupled receptor 143; Ocular albinism type 1 protein
Accession No.	Swiss-Prot#:P51810NCBI Gene ID:4935
Uniprot	P51810
GeneID	4935;
Calculated MW	43KD
Concentration	1 mg/ml
Formulation	Liquid in 0.42% Potassium phosphate, 0.87% Sodium chloride, pH 7.3, 30% glycerol, and 0.01% sodium azide.
Storage	Store at -20°C

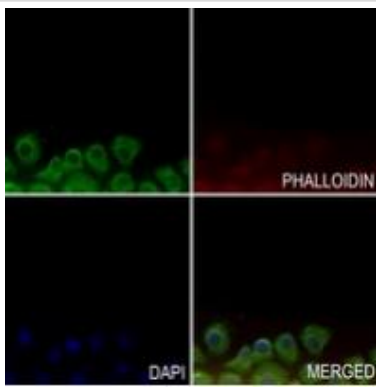
## Application Details

WB (1/500 - 1/1000), IF/ICC (1/50 - 1/200)

## Images



Western blot analysis of GPR143 expression in PC12 (A) whole cell lysates.



Immunofluorescent analysis of GPR143 staining in SGC7901 cells. Formalin-fixed cells were permeabilized with 0.1% Triton X-100 in TBS for 5-10 minutes and blocked with 3% BSA-PBS for 30 minutes at room temperature. Cells were probed with the primary antibody in 3% BSA-PBS and incubated overnight at 4 °C in a humidified chamber. Cells were washed with PBST and incubated with a AF488-conjugated secondary antibody (green) in PBS at room temperature in the dark. Phalloidin - AF594 was used to stain Actin filaments (red). DAPI was used to stain the cell nuclei (blue)

---

Note: This product is for in vitro research use only