

LPHN1 Antibody

Catalog No: #47888

Orders: order@signalwayantibody.comSupport: tech@signalwayantibody.com

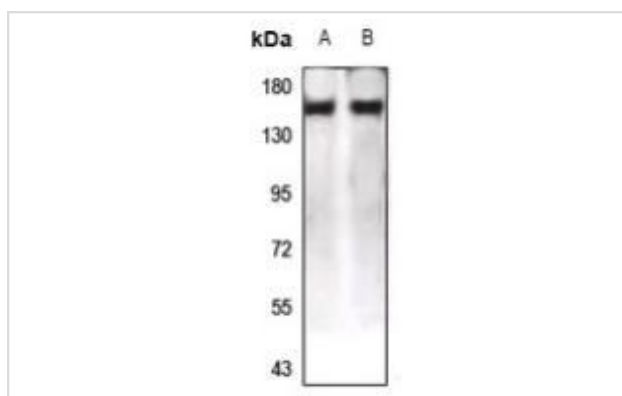
Description

Product Name	LPHN1 Antibody
Host Species	Rabbit
Clonality	Polyclonal
Purification	The antibody was purified by immunogen affinity chromatography.
Applications	WB, IF/ICC
Species Reactivity	Hu,Ms,Rt
Specificity	Recognizes endogenous levels of LPHN1 protein.
Immunogen Description	KLH-conjugated synthetic peptide encompassing a sequence within the center region of human LPHN1.
Target Name	LPHN1
Other Names	KIAA0821; LEC2; Latrophilin-1; Calcium-independent alpha-latrotoxin receptor 1; C1RL-1; Lectomedin-2
Accession No.	Swiss-Prot#:O94910NCBI Gene ID:22859
Uniprot	O94910
GeneID	22859;
Calculated MW	162KD
Concentration	1 mg/ml
Formulation	Liquid in 0.42% Potassium phosphate, 0.87% Sodium chloride, pH 7.3, 30% glycerol, and 0.01% sodium azide.
Storage	Store at -20°C

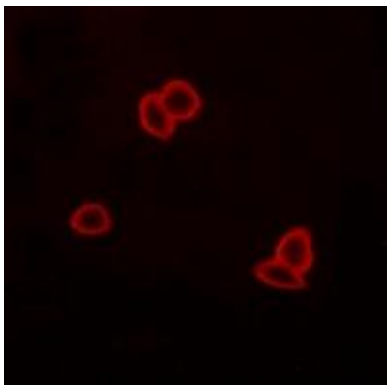
Application Details

WB (1/500 - 1/1000), IF/ICC (1/50 - 1/200)

Images



Western blot analysis of LPHN1 expression in rat kidney (A), HeLa (B) whole cell lysates.



Immunofluorescent analysis of LPHN1 staining in LOVO cells. Formalin-fixed cells were permeabilized with 0.1% Triton X-100 in TBS for 5-10 minutes and blocked with 3% BSA-PBS for 30 minutes at room temperature. Cells were probed with the primary antibody in 3% BSA-PBS and incubated overnight at 4 °C in a humidified chamber. Cells were washed with PBST and incubated with a AF594-conjugated secondary antibody (red) in PBS at room temperature in the dark.

Note: This product is for in vitro research use only