

## MAS1L Antibody

Catalog No: #47889

Orders: [order@signalwayantibody.com](mailto:order@signalwayantibody.com)Support: [tech@signalwayantibody.com](mailto:tech@signalwayantibody.com)

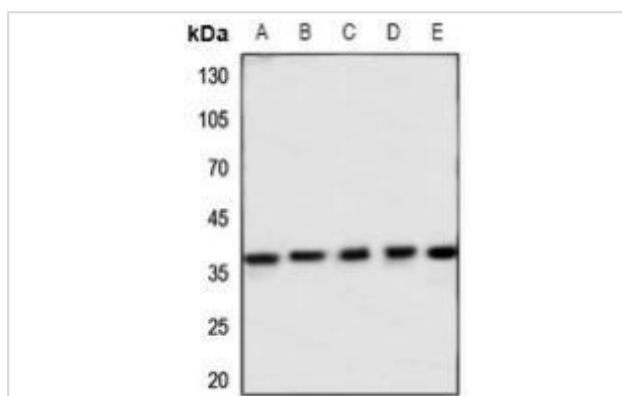
## Description

Product Name	MAS1L Antibody
Host Species	Rabbit
Clonality	Polyclonal
Purification	The antibody was purified by immunogen affinity chromatography.
Applications	WB, IHC, IF/ICC
Species Reactivity	Hu,Ms,Rt
Specificity	Recognizes endogenous levels of MAS1L protein.
Immunogen Description	KLH-conjugated synthetic peptide encompassing a sequence within the center region of human MAS1L.
Target Name	MAS1L
Other Names	MRG; Mas-related G-protein coupled receptor MRG; MAS-R; MAS1-like
Accession No.	Swiss-Prot#:P35410NCBI Gene ID:116511
Uniprot	P35410
GeneID	116511;
Calculated MW	42KD
Concentration	1 mg/ml
Formulation	Liquid in 0.42% Potassium phosphate, 0.87% Sodium chloride, pH 7.3, 30% glycerol, and 0.01% sodium azide.
Storage	Store at -20°C

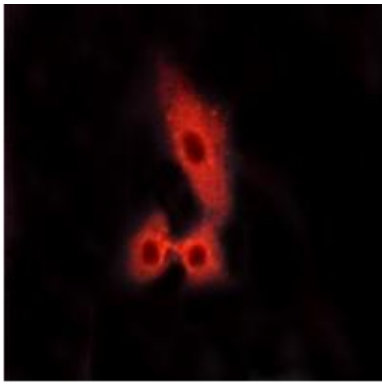
## Application Details

WB (1/500 - 1/1000), IHC (1/50 - 1/100), IF/ICC (1/50 - 1/200)

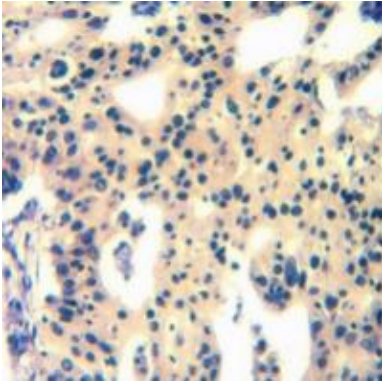
## Images



Western blot analysis of MAS1L expression in Hela (A), H446 (B), mouse lung (C), mouse testis (D), rat lung (E) whole cell lysates.



Immunofluorescent analysis of MAS1L staining in HeLa cells. Formalin-fixed cells were permeabilized with 0.1% Triton X-100 in TBS for 5-10 minutes and blocked with 3% BSA-PBS for 30 minutes at room temperature. Cells were probed with the primary antibody in 3% BSA-PBS and incubated overnight at 4 °C in a humidified chamber. Cells were washed with PBST and incubated with a AF594-conjugated secondary antibody (red) in PBS at room temperature in the dark.



Immunohistochemical analysis of MAS1L staining in human colorectal cancer formalin fixed paraffin embedded tissue section. The section was pre-treated using heat mediated antigen retrieval with sodium citrate buffer (pH 6.0). The section was then incubated with the antibody at room temperature and detected using an HRP conjugated compact polymer system. DAB was used as the chromogen. The section was then counterstained with haematoxylin and mounted with DPX.

---

Note: This product is for in vitro research use only