

MRPS18A Antibody

Catalog No: #47897

Orders: order@signalwayantibody.comSupport: tech@signalwayantibody.com

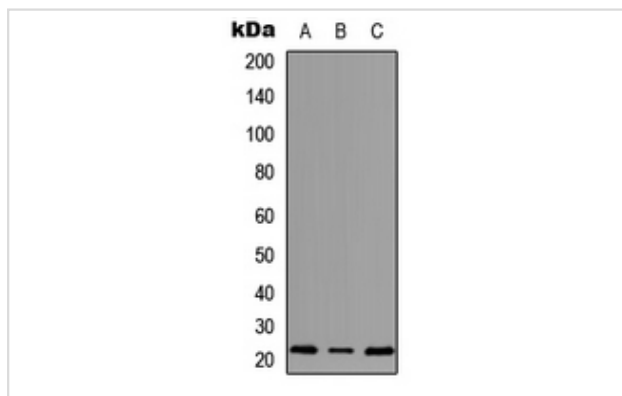
Description

| | |
|-----------------------|---|
| Product Name | MRPS18A Antibody |
| Host Species | Rabbit |
| Clonality | Polyclonal |
| Purification | The antibody was purified by immunogen affinity chromatography. |
| Applications | WB, IHC |
| Species Reactivity | Hu,Ms,Rt |
| Specificity | Recognizes endogenous levels of MRPS18A protein. |
| Immunogen Description | KLH-conjugated synthetic peptide encompassing a sequence within the center region of human MRPS18A. |
| Target Name | MRPS18A |
| Other Names | 28S ribosomal protein S18a, mitochondrial; MRP-S18-a; Mrps18a; S18mt-a; 28S ribosomal protein S18-3, mitochondrial; MRP-S18-3 |
| Accession No. | Swiss-Prot#:Q9NVS2NCBI Gene ID:55168 |
| Uniprot | Q9NVS2 |
| GeneID | 55168; |
| Calculated MW | 22KD |
| Concentration | 1 mg/ml |
| Formulation | Liquid in 0.42% Potassium phosphate, 0.87% Sodium chloride, pH 7.3, 30% glycerol, and 0.01% sodium azide. |
| Storage | Store at -20°C |

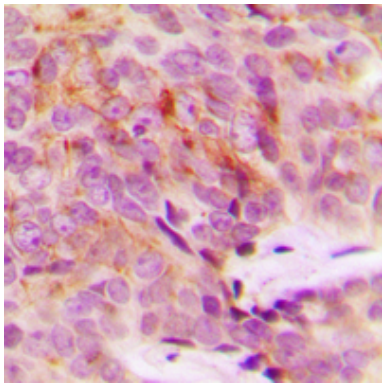
Application Details

WB (1/500 - 1/1000), IHC (1/100 - 1/200)

Images



Western blot analysis of MRPS18A expression in HEK293T (A), Raw264.7 (B), H9C2 (C) whole cell lysates.



Immunohistochemical analysis of MRPS18A staining in human breast cancer formalin fixed paraffin embedded tissue section. The section was then incubated with the antibody at room temperature and detected using an HRP conjugated compact polymer system. DAB was used as the chromogen. The section was then counterstained with haematoxylin and mounted with DPX.

Note: This product is for in vitro research use only