

IDOL Antibody

Catalog No: #47899

Orders: order@signalwayantibody.comSupport: tech@signalwayantibody.com

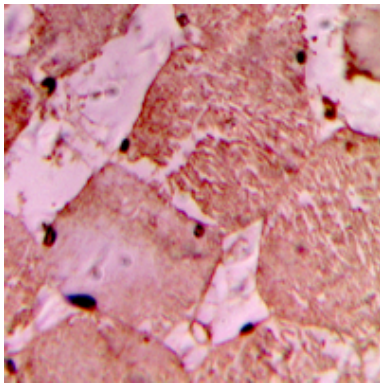
Description

Product Name	IDOL Antibody
Host Species	Rabbit
Clonality	Polyclonal
Purification	The antibody was purified by immunogen affinity chromatography.
Applications	WB, IHC
Species Reactivity	Hu,Ms,Rt
Specificity	Recognizes endogenous levels of IDOL protein.
Immunogen Description	KLH-conjugated synthetic peptide encompassing a sequence within the center region of human IDOL.
Target Name	MYLIP
Other Names	BZF1; IDOL; E3 ubiquitin-protein ligase MYLIP; Inducible degrader of the LDL-receptor; Idol; Myosin regulatory light chain interacting protein; MIR
Accession No.	Swiss-Prot#:Q8WY64NCBI Gene ID:29116
Uniprot	Q8WY64
GeneID	29116;
Calculated MW	50KD
Concentration	1 mg/ml
Formulation	Liquid in 0.42% Potassium phosphate, 0.87% Sodium chloride, pH 7.3, 30% glycerol, and 0.01% sodium azide.
Storage	Store at -20°C

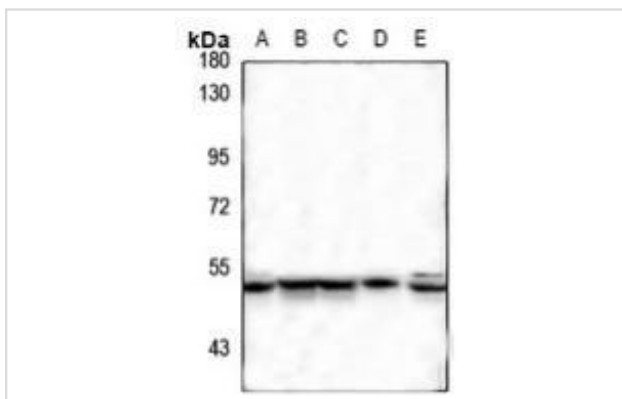
Application Details

WB (1/500 - 1/1000), IHC (1/100 - 1/200)

Images



Immunohistochemical analysis of IDOL staining in human heart formalin fixed paraffin embedded tissue section. The section was then incubated with the antibody at room temperature and detected using an HRP conjugated compact polymer system. DAB was used as the chromogen. The section was then counterstained with haematoxylin and mounted with DPX.



Western blot analysis of IDOL expression in Hela (A), COS7 (B), MCF7 (C), PC12 (D), CT26 (E) whole cell lysates.

Note: This product is for in vitro research use only