

## OLFML2A Antibody

Catalog No: #47901

Orders: [order@signalwayantibody.com](mailto:order@signalwayantibody.com)Support: [tech@signalwayantibody.com](mailto:tech@signalwayantibody.com)

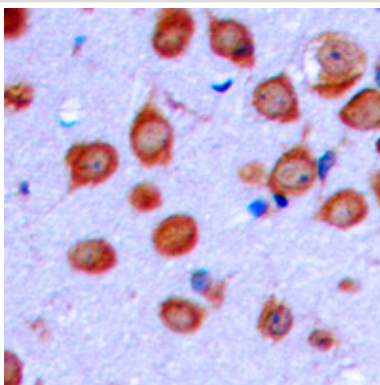
## Description

Product Name	OLFML2A Antibody
Host Species	Rabbit
Clonality	Polyclonal
Purification	The antibody was purified by immunogen affinity chromatography.
Applications	WB, IHC, IF/ICC
Species Reactivity	Hu,Ms,Rt
Specificity	Recognizes endogenous levels of OLFML2A protein.
Immunogen Description	KLH-conjugated synthetic peptide encompassing a sequence within the center region of human OLFML2A.
Target Name	OLFML2A
Other Names	Olfactomedin-like protein 2A; Photomedin-1
Accession No.	Swiss-Prot#:Q68BL7NCBI Gene ID:169611
Uniprot	Q68BL7
GeneID	169611;
Calculated MW	73KD
Concentration	1 mg/ml
Formulation	Liquid in 0.42% Potassium phosphate, 0.87% Sodium chloride, pH 7.3, 30% glycerol, and 0.01% sodium azide.
Storage	Store at -20°C

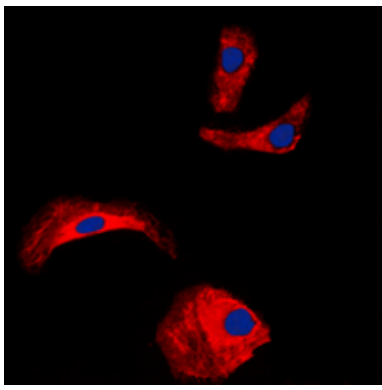
## Application Details

WB (1/500 - 1/1000), IHC (1/100 - 1/200), IF/ICC (1/100 - 1/500)

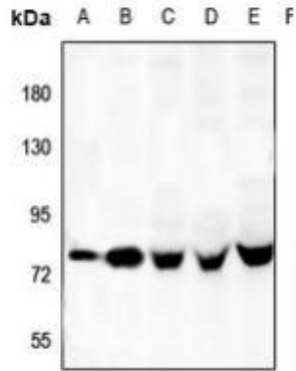
## Images



Immunohistochemical analysis of OLFML2A staining in human brain formalin fixed paraffin embedded tissue section. The section was then incubated with the antibody at room temperature and detected using an HRP conjugated compact polymer system. DAB was used as the chromogen. The section was then counterstained with haematoxylin and mounted with DPX.



Immunofluorescent analysis of OLFML2A staining in HepG2 cells. Formalin-fixed cells were permeabilized with 0.1% Triton X-100 in TBS for 5-10 minutes and blocked with 3% BSA-PBS for 30 minutes at room temperature. Cells were probed with the primary antibody in 3% BSA-PBS and incubated overnight at 4 C in a humidified chamber. Cells were washed with PBST and incubated with a DyLight 594-conjugated secondary antibody (red) in PBS at room temperature in the dark. DAPI was used to stain the cell nuclei (blue).



Western blot analysis of OLFML2A expression in rat lung (A), mouse lung (B), SGC7901 (C), HEK293T (D), MCF7 (E) whole cell lysates

---

Note: This product is for in vitro research use only