

RAD51C Antibody

Catalog No: #47905

Orders: order@signalwayantibody.comSupport: tech@signalwayantibody.com

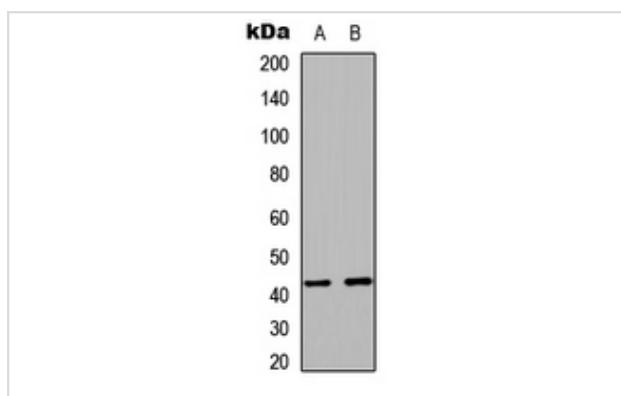
Description

Product Name	RAD51C Antibody
Host Species	Rabbit
Clonality	Polyclonal
Purification	The antibody was purified by immunogen affinity chromatography.
Applications	WB, IHC, IF/ICC
Species Reactivity	Hu
Specificity	Recognizes endogenous levels of RAD51C protein.
Immunogen Description	KLH-conjugated synthetic peptide encompassing a sequence within the center region of human RAD51C.
Target Name	RAD51C
Other Names	RAD51L2; DNA repair protein RAD51 homolog 3; R51H3; RAD51 homolog C; RAD51-like protein 2
Accession No.	Swiss-Prot#:O43502NCBI Gene ID:5889
Uniprot	O43502
GeneID	5889;
Calculated MW	42KD
Concentration	1 mg/ml
Formulation	Liquid in 0.42% Potassium phosphate, 0.87% Sodium chloride, pH 7.3, 30% glycerol, and 0.01% sodium azide.
Storage	Store at -20°C

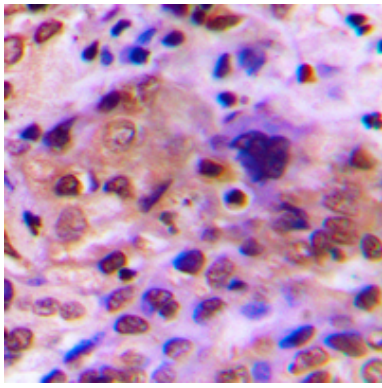
Application Details

WB (1/500 - 1/1000), IHC (1/100 - 1/200), IF/ICC (1/100 - 1/500)

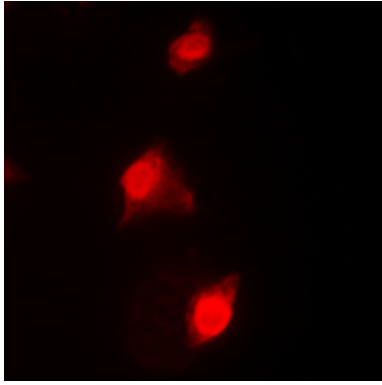
Images



Western blot analysis of RAD51C expression in HeLa (A), COS7 (B) whole cell lysates.



Immunohistochemical analysis of RAD51C staining in human breast cancer formalin fixed paraffin embedded tissue section. The section was then incubated with the antibody at room temperature and detected using an HRP conjugated compact polymer system. DAB was used as the chromogen. The section was then counterstained with haematoxylin and mounted with DPX.



Immunofluorescent analysis of RAD51C staining in HeLa cells. Formalin-fixed cells were permeabilized with 0.1% Triton X-100 in TBS for 5-10 minutes and blocked with 3% BSA-PBS for 30 minutes at room temperature. Cells were probed with the primary antibody in 3% BSA-PBS and incubated overnight at 4 C in a humidified chamber. Cells were washed with PBST and incubated with a DyLight 594-conjugated secondary antibody (red) in PBS at room temperature in the dark.

Note: This product is for in vitro research use only